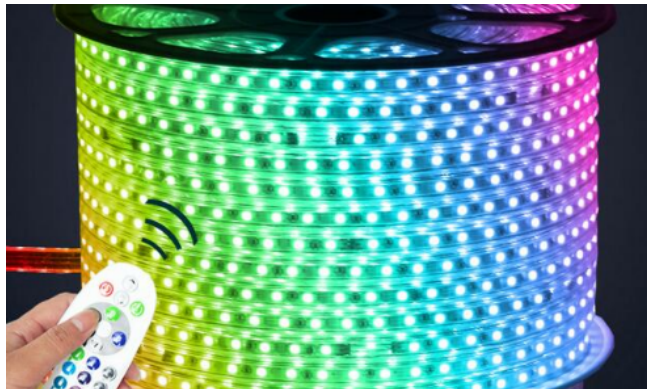


# HOTEL



**CYANTEK**  
LED LIGHTING

## LIGHTING SOLUTIONS



CYANTEK LED LIGHTING

(562) 499-9597

562) 392-2999

(844) 456-2926

15323 GARFIELD AVE UNIT B,  
PARAMOUNT CA 90723



[www.cyantekledlighting.com](http://www.cyantekledlighting.com)

# ABOUT CYANTEK



## OUR SERVICE

- Residential, Commercial & Industrial Solutions for LED Lighting & Electrical Supply
- Outdoor Lighting, Parking Lights & Gardening
- Direct Import from Manufacturer.
- Warranty and Amazing Customer Service.
- Order Consolidation



## CONTACT US

(562)499-9597 / (562)392-2999

15323 Garfield Ave Unit B

Paramount, CA 90723

# TABLE OF CONTENTS

<b>OUTDOOR LIGHTING</b>	<b>Page</b>	<b>REFRIGERATION</b>	<b>Page</b>
Area Lights G10	A-1	LED Cooler Lights	D-1
Area Lights G09	A-2	LED Vapor Lights	D-2
Wall Packs	A-3		
LED Floodlights Modular	A-4		
LED Floodlights Compact	A-5	<b>LED SIGNAGE LIGHTS</b>	
LED Solar Lightings	A-6	LED Sign Tubes 360 Double Face	E-1
LED Canopy Lights	A-7	LED Sign Tubes 180 Single Face	E-2
LED Post Top Lights	A-8	LED Light Bars	E-3
LED Bollard Lights	A-9	LED Modules	E-4
LED Cylinder Lights	A-10		
LED Security Lights	A-11		
Outdoor Lighting Accessories	A-12		
		<b>LED POWER SUPPLY</b>	
<b>INDOOR LIGHTING</b>		LED Drivers/LED Controllers	F-1
LED T8 Tubes	B-1		
LED T5/U-Tube/Emergency Tube	B-2		
LED Integrated Tubes	B-3		
LED Linear Strip Lights	B-4	<b>LED ROPE LIGHTS</b>	
LED Architectural Lights	B-5	LED Rope Lights	G-1
LED Track Lights	B-6	LED Flex Tubes	G-1
LED Panels	B-7	LED Ribbon Lights	G-2
LED Troffers	B-8		
LED Wrap Arounds Lights	B-9		
LED High Bay Lights	B-10	<b>ALUMINUM CHANNELS</b>	
LED Recessed Light	B-11	Channels	H-1
LED Disk Light	B-12		
LED Canless Downlight Lights	B-13		
LED Commercial Downlight Lights	B-14	<b>EXIT SIGNS</b>	
LED Ceiling Lights	B-15	Exit Signs /Emergency Lights	I-1
LED Wall Sconces	B-16		
LED Vanity Lights	B-17		
LED Bulbs	B-18		
LED PL LAMPS	B-19		
LED CORN Bulbs	B-20		
LED Magnetic Strips	B-21		
<b>INDOOR MIRROR LIGHTS</b>			
LED Color Tunable Mirror Lights	C-1		
LED Oval Color Tunable Mirror Lights	C-2		
LED RGB Mirror Light	C-3		



**CYANTEK**  
LED LIGHTING

Authorized  
Distributor for

**VoltaLED**

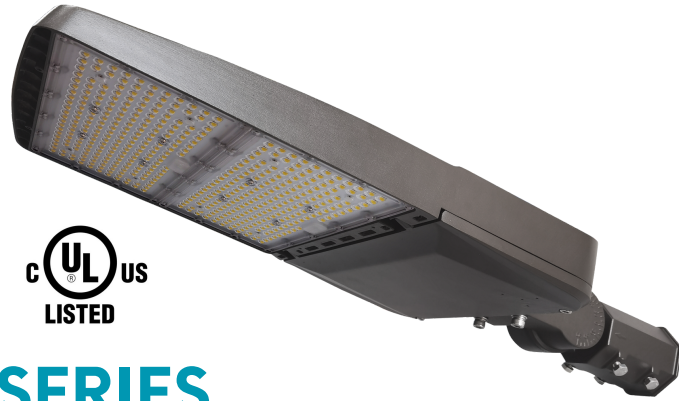


### APPLICATIONS

- Parking Lot
- Building Exterior



## G10 SERIES



**V71**  
80/100/120/150W

4 wattages Selectable  
Lumens: Up to 23250Lms  
CCT: 5000K  
Input Voltage:100-277V CRI:>70  
Housing: Bronze



**V72**  
170/200/220/240W

4 wattages Selectable  
Lumens: Up to 37200Lms  
CCT: 5000K  
Input Voltage:100-277V CRI:>70  
Housing: Bronze



**V73**  
240/260/280/310W

4 wattages Selectable  
Lumens: Up to 48050Lms  
CCT: 5000K  
Input Voltage:100-277V CRI:>70  
Housing: Bronze



**V74**  
80/100/120/150W

4 wattages Selectable  
Lumens: Up to 23250Lms  
CCT: 5000K  
Input Voltage:100-277V CRI:>70  
Housing: White



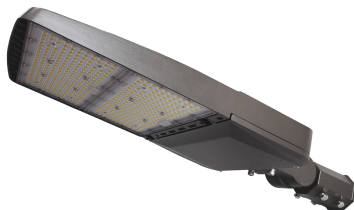
**V75**  
240/260/280/310W

4 wattages Selectable  
Lumens: Up to 48050Lms  
CCT: 5000K  
Input Voltage:100-277V CRI:>70  
Housing: White



**V76**  
80/100/120/150W

4 wattages Selectable  
Lumens: Up to 23250Lms  
CCT: 5000K  
Input Voltage:277-480V CRI:>70  
Housing: Bronze



**V77**  
240/260/280/310W  
4 wattages Selectable  
Lumens: Up to 48050Lms  
CCT: 5000K  
Input Voltage:277-480V CRI:>70  
Housing: Bronze

### ACCESSORIES



Photocell 120-277v /120-347v/208-480v  
**1070**



Photocell 277VAC-480VAC  
**1071**



Slip fitter  
**1060**



Trunion  
**1061**



Arm  
**1062**



Glare Shield  
**1063**



PIR Motion Sensor 12 V  
**1064**

### APPLICATIONS

- Parking Lot
- Building Exterior



### G09 SERIES



**V67**

**100W**

Lumens:15000Lms  
CCT: 5000K CRI:>70  
Input Voltage:100-277V  
Housing: Bronze



**V68**

**150W**

Lumens:22500Lms  
CCT: 5000K CRI:>70  
Input Voltage:100-277V  
Housing: Bronze



**V69**

**200W**

Lumens:30000Lms  
CCT: 5000K CRI:>70  
Input Voltage:100-277V  
Housing: Bronze



**V70**

**320W**

Lumens:48000Lms  
CCT: 5000K CRI:>70  
Input Voltage:100-277V  
Housing: Bronze

### MOUNTING BRACKET OPTIONS



**1065**



**1066**



**1067**

Control Options



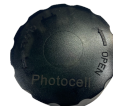
Photocell 120VAC-277VAC

**1070**



Photocell 277VAC-480VAC

**1071**



Photocell 120VAC-277VAC

**1069**



Motion Sensor

**1068**



## APPLICATIONS

- Parking Lot
- Building Exterior



## TRADITIONAL



V113

### 30/40/50W

3 Wattages Selectable  
 Lumens: Up to 7000Lms  
 3CCT: 3000/4000/5000K  
 Input Voltage:100-277V CRI:>70  
 Housing: Bronze



V112

### 72/96/120W

3 wattages Selectable  
 Lumens: Up to 16800Lms  
 3CCT: 3000/4000/5000K  
 Input Voltage:100-277V CRI:>70  
 Housing: Bronze  
 Built-in Photocell

## ADJUSTABLE



V109

### 30/40/50W

3 wattages Selectable  
 Lumens: Up to 7000Lms  
 3CCT: 3000/4000/5000K  
 Input Voltage:100-277V CRI:>70  
 Housing: Bronze  
 Built-in Photocell



V110

### 72/96/120W

3 wattages Selectable  
 Lumens: Up to 16800Lms  
 3CCT: 3000/4000/5000K  
 Input Voltage:100-277V CRI:>70  
 Housing: Bronze  
 Built-in Photocell

## ROTATABLE



V109

### 40W

Lumens: 5200Lms  
 CCT: 5000K  
 Input Voltage:100-277V  
 CRI:>70  
 Housing: Bronze

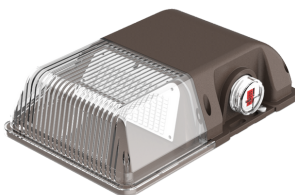


V100

### 80W

Lumens: 10400Lms  
 CCT: 5000K  
 Input Voltage:100-277V CRI:>70  
 Housing: Bronze

## MINI WALLPACK



V72

### 15/20/25W

3 wattages Selectable  
 Lumens: Up to 3375Lms  
 3CCT: 3000/4000/5000K  
 Input Voltage:100-277V CRI:>70  
 Housing: Bronze  
 Built-in Photocell

## ACCESSORIES



1059

### APPLICATIONS

- Landscaping
- Building Exterior



### MODULAR SERIES

#### LED FLOOD LIGHT MODULAR -KNUCKLE



**L19**

**15W**

Lumens: 1947Lms CRI:>70  
3CCT: 3000/4000/5000K  
Input Voltage:100-277V  
Housing: Bronze Bracket: Knuckle



**L34**

**15/20/25W**

3wattages Selectable  
Lumens: Up to 3125Lms  
3CCT: 3000/4000/5000K  
Input Voltage:100-277V CRI:>80  
Housing: Bronze



**L21**

**30W**

Lumens: 3600Lms CRI:>70  
CCT: 5000K  
Input Voltage:100-277V  
Housing: Bronze Bracket: Knuckle



**L23**

**50W**

Lumens: 6000Lms CRI:>90  
CCT: 5000K  
Input Voltage:100-277V  
Housing: Bronze Bracket: Knuckle

#### LED FLOOD LIGHT MODULAR -U-BRACKET



**L18**

**15W**

Lumens: 1947Lms CRI:>70  
3CCT: 3000/4000/5000K  
Input Voltage:100-277V  
Housing: Bronze Bracket: Trunnion



**L20**

**30W**

Lumens: 3600Lms CRI:>70  
CCT: 5000K  
Input Voltage:100-277V  
Housing: Bronze Bracket: U-Bracket



**L22**

**50W**

Lumens: 6000Lms CRI:>70  
CCT: 5000K  
Input Voltage:100-277V  
Housing: Bronze Bracket: U-Bracket

#### LED FLOOD LIGHT MODULAR 100W



**L25**

**100W**

Lumens: 13000Lms  
CCT: 5000K  
Input Voltage:100-277V  
CRI:>70  
Housing: Bronze  
Bracket:Yoke



**L24**

**100W**

Lumens: 13000Lms  
CCT: 5000K  
Input Voltage:100-277V  
CRI:>70  
Housing: Bronze  
Bracket: Knuckle



**L32**

**100W**

Lumens: 13000Lms  
CCT: 5000K  
Input Voltage:100-277V  
CRI:>70  
Housing: Bronze  
Bracket: Slip Fitter



### LED FLOOD LIGHT COMPACT - MODULAR V-SERIES



**L27**  
**30W**

Lumens: 3600Lms CRI:>70  
CCT: 5000K  
Input Voltage:100-277V  
Housing: Bronze  
Bracket: Knuckle



**L29**  
**50W**

Lumens: 3600Lms CRI:>70  
CCT: 5000K  
Input Voltage:100-277V  
Housing: Bronze  
Bracket: Knuckle



**L26**  
**30W**

Lumens: 3600Lms CRI:>70  
CCT: 5000K  
Input Voltage:100-277V  
Housing: Bronze  
Bracket: Yoke



**L28**  
**50W**

Lumens: 3600Lms CRI:>70  
CCT: 5000K  
Input Voltage:100-277V  
Housing: Bronze  
Bracket: Yoke

### LED FLOOD LIGHT MODULAR 5700K



**L30**  
**150W**

Lumens: 18750Lms CRI:>70  
CCT: 5700K  
Input Voltage:100-277V  
Housing: Black  
Bracket:U Bracket



**L31**  
**240W**

Lumens: 30000Lms CRI:>70  
CCT: 5700K  
Input Voltage:100-277V  
Housing: Black  
Bracket:U Bracket



**L32**  
**300W**

Lumens: 37500Lms CRI:>70  
CCT: 5700K  
Input Voltage:100-277V  
Housing: Black  
Bracket: U Bracket

### LED FLOOD LIGHT E-STYLE - U BRACKET



**L80**  
**30W**

Lumens: 3900Lms  
CCT: 5000K  
Input Voltage:100-277V CRI:>70  
Housing: Black  
Bracket:U Bracket



**L82**  
**50W**

Lumens: 6500Lms  
CCT: 5000K  
Input Voltage:100-277V CRI:>70  
Housing: Black  
Bracket:U Bracket



**L82**  
**100W**

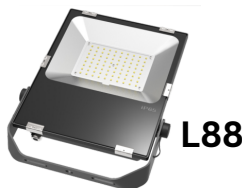
Lumens: 13000Lms  
CCT: 5000K  
Input Voltage:100-277V CRI:>70  
Housing: Black  
Bracket:U Bracket



**L82**  
**150W**

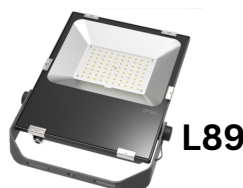
Lumens: 19500Lms  
CCT: 5000K  
Input Voltage:100-277V CRI:>70  
Housing: Black  
Bracket:U Bracket

### LED FLOOD LIGHT GLASS SERIES



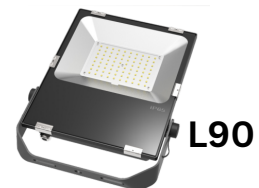
**L88**  
**100W**

Lumens: 13000Lms  
CCT: 5700K  
Input Voltage:100-277V CRI:>70  
Housing: Black  
Bracket: U Bracket



**L89**  
**150W**

Lumens: 19500Lms  
CCT: 5700K  
Input Voltage:100-277V CRI:>70  
Housing: Black  
Bracket: U Bracket



**L90**  
**200W**

Lumens: 26000Lms  
CCT: 5700K  
Input Voltage:100-277V CRI:>70  
Housing: Black  
Bracket: U Bracket





## SOLAR LIGHTING

### APPLICATIONS

Designed For Remote Areas  
12-16Ft Lighting Poles, No  
Need Cable, No Electricity.



# 70W

Lumens: 7000Lms

CCT: 5700K

Input Voltage:100-277V CRI:>70

Housing: Grey

Bracket:Slip Fitter

IP Rating:IP66

Beam Angle: 150\*70

Battery:18650 Lithium Battery 12V 50Ah

Operation Time: Full Power>12hours,

Intelligent Mode 3-4days

Control Mode : Photocell + Sensor

Dimension: L37.2"\*W11.7"\*H5"

#### Solar LED Street Light Features

All In One Design Function , Low Profile Design,  
With Motion Sensor And Smart Controller All  
Built In. Designed For Remote Areas 12-16Ft  
Lighting Poles, No Need Cable, No Electricity.  
Deep Cycle Battery, Charge And Discharge  
Over 500 Times. Can Work 3- 4 Continuous  
Rainy Days At Intelligent Mode.



# CANOPY LIGHTS

## GARAGE CANOPY LIGHT



### APPLICATIONS

- Parking Structures
- Garage Locations
- Entryways/Overhangs
- Commercial applications



**V128**

### 30/40/50W

3 Wattages Selectable  
 Lumens: Up to 6750Lms  
 3CCT: 3000/4000/5000K  
 Input Voltage:100-277V CRI:>70  
 Housing: Bronze  
 Dimention:L9.5"\*W9.5"\*H3.5"



**V129**

### 72/96/120W

3 wattages Selectable  
 Lumens: Up to 15000Lms  
 3CCT: 3000/4000/5000K  
 Input Voltage:100-277V CRI:>70  
 Housing: Bronze  
 Dimention:L12"\*W12"\*H4"

## GAS STATION CANOPY LIGHT



### APPLICATIONS

Gas Station Lighting



**V132**

### 150W

Lumens: 19050Lms  
 CCT: 5000K  
 Input Voltage:100-277V CRI:>70  
 Housing: White  
 Dimention:L14.9"\*W14.9"\*H3.36"



**V139**

### 240W

Lumens: 33600Lms  
 CCT: 5700K  
 Input Voltage:100-277V CRI:>70  
 Housing: White  
 Dimention:L21"\*W21"\*H1.5"



### APPLICATIONS

- Shopping Malls
- Sporting Complex
- Garden Lighting
- Parking Lot

## LED POST TOP LIGHTS



**L90**

**20/40/50/60W**

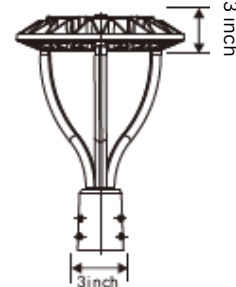
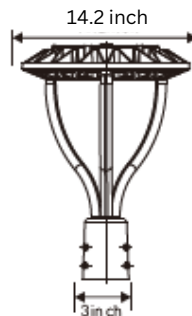
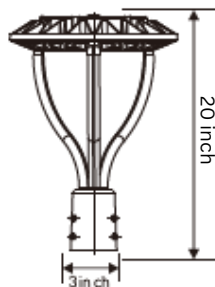
4 wattages Selectable  
 Lumens: Up to 7800Lms  
 3 CCT: 3000/4000/5000K  
 Input Voltage: 100-277V CRI: >70  
 Housing: Black



**L35**

**80/100/120/150W**

4 wattages Selectable  
 Lumens: Up to 19500Lms  
 3 CCT: 3000/4000/5000K  
 Input Voltage: 100-277V CRI: >70  
 Housing: Black



### ACCESSORIES

Control Options



Photocell

Photocell 120VAC-277VAC

**1070**



**922**

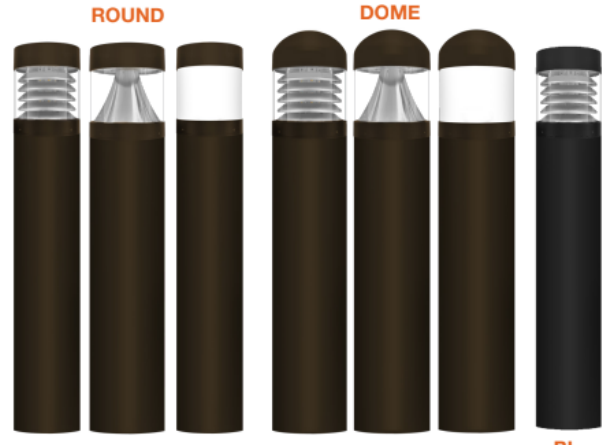
4 " Reducer  
(Square Pole)



**924**

4 " Reducer  
(Round Pole)

### LED BOLLARD LIGHTS

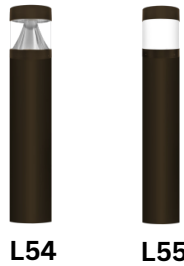


### APPLICATIONS

- Walkways•
- Driveways•
- Lighting Landscape•
- Family-Multi ,Hospitality•
- Corridors Outdoor•
- Industrial



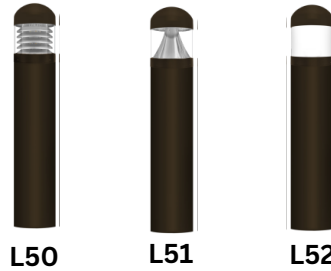
#### ROUND FLAT



12/16/22W

3 Wattages Selectable  
 Lumens: Up to 2860Lms  
 5CCT: 27/30/35/40/50K  
 Input Voltage:100-277V  
 CRI:>80  
 Housing: Bronze

#### DOME FLAT



12/16/22W

3 Wattages Selectable  
 Lumens: Up to 2860Lms  
 5CCT: 27/30/35/40/50K  
 Input Voltage:100-277V  
 CRI:>80  
 Housing: Bronze

#### BL BLACK



12/16/22W

3 Wattages Selectable  
 Lumens: Up to 2860Lms  
 5CCT: 27/30/35/40/50K  
 Input Voltage:100-277V  
 CRI:>80  
 Housing: Bronze

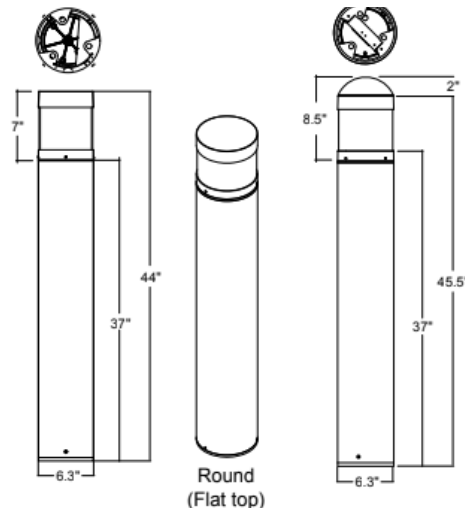
### ACCESSORIES



#### SENSOR

Harvesting Daylight /w  
 Sensor Motion Level Bi  
 Control Remote- sensor  
 external /w Version  
 Detachable  
 Compatible

### DIMENSIONS





### LED CYLINDER LIGHTS



#### APPLICATIONS

Building Exteriors  
Hotels



**L56**

**2X20W**

Lumens: 4800Lms  
CCT: 3000K  
Input Voltage:100-277V IP66  
Housing: Bronze  
Dimension: Dia5.78"\*W11.8"



**L56**

**2X20W**

Lumens: 4800Lms  
CCT: 5000K  
Input Voltage:100-277V IP66  
Housing: Bronze  
Dimension: Dia5.78"\*W11.8"



**L141**

**2X20W**

Lumens: 4800Lms  
CCT: BLUE  
Input Voltage:100-277V IP66  
Housing: Bronze  
Dimension: Dia5.78"\*W11.8"



**L144**

**2X20W**

CCT: RGBW  
Input Voltage:100-277V IP66  
Housing: Bronze  
Dimension: Dia5.78"\*W11.8"



### APPLICATIONS

SUITABLE APPLICATIONS

Built in dusk to dawn photocell available

Area Lighting

Lightweight and easy access wiring

## SECURITY LIGHTS MOTION SENSOR



L550

### 20w

Lumens: 2400Lms  
CCT: 5000K CRI:>90  
Input Voltage:120V  
Housing: White  
with Photocell &  
Motion Sensor



L550

### 20w

Lumens: 2400Lms  
CCT: 5000K CRI:>90  
Input Voltage:120V  
Housing: Black  
with Photocell &  
Motion Sensor



L552

### 35w

Lumens: 4200Lms  
CCT: 5000K CRI:>90  
Input Voltage:120V  
Housing: White  
with Photocell &  
Motion Sensor



L553

### 35w

Lumens: 4200Lms  
CCT: 5000K CRI:>90  
Input Voltage:120V  
Housing: Black  
with Photocell &  
Motion Sensor

### OUTDOOR LIGHTING ACCESSORIES

#### WALL TENONS



4" WALL TENON  
920



90 WALL TENON  
921



4" ADAPTER  
922



5" ADAPTER  
923

#### REDUCER



4" REDUCER  
924



5" REDUCER  
925



SINGLE SPOKE  
931



DOUBLE SPOKE 180  
926

#### SPOKE



DOUBLE SPOKE 90  
927



TRIPLE SPOKE 120  
928



TRIPLE SPOKE 90  
929



QUAD SPOKE  
930

#### BULL HORN



BULL HORN  
TWIN  
909



BULL HORN  
TWINS IN LINE  
913



BULL HORN  
TRIPLE IN LINE  
911



BULL HORN  
QUAD  
910

#### SQUARE POLE



4" SQUARE  
15 FT. POLE



4" SQUARE  
20 FT. POLE



4" SQUARE  
25 FT. POLE

### LED T8 TUBES



2 FT-3FT-4FT-5FT-6FT- 8FT

Code	Size	Wattage	Lumens	CCT	Voltage	CRI	Wiring	Type	Lens
300	2FT	9W	1170Lms	5000K	100-277V	>80	TypeAB	By-pin	Frosted
301	2FT	9W	1170Lms	4000K	100-277V	>80	TypeAB	By-pin	Frosted
302	3FT	12W	1560Lms	5000K	100-277V	>80	TypeAB	By-pin	Frosted
303	4FT	18W	2340Lms	5000K	100-277V	>80	TypeAB	By-pin	Frosted
304	4FT	18W	2340Lms	5000K	100-277V	>80	TypeAB	By-pin	Clear
305	4FT	18W	2340Lms	4000K	100-277V	>80	TypeAB	By-pin	Frosted
307	4FT	18W	2340Lms	3000K	100-277V	>80	TypeAB	By-pin	Frosted
308	4FT	15W	1950Lms	5000K	100-277V	>80	TypeAB	By-pin	Frosted
309	4FT	15W	1950Lms	4000K	100-277V	>80	TypeAB	By-pin	Frosted
310	4FT	12W	1560Lms	5000K	100-277V	>80	TypeAB	By-pin	Frosted
311	4FT	12W	1560Lms	4000K	100-277V	>80	TypeAB	By-pin	Frosted
336	4FT	22W	3080Lms	6500K	100-277V	>80	TypeB	By-pin	Frosted
337	4FT	22W	3080Lms	6500K	100-277V	>80	TypeB	By-pin	Clear
338	4FT	22W	3080Lms	30/40/50/65K	100-277V	>80	TypeB	By-pin	Frosted
339	4FT	22W	3080Lms	30/40/50/65K	100-277V	>80	TypeB	By-pin	Clear
312	5FT	27W	3510Lms	5000K	100-277V	>80	TypeB	By-pin	Frosted
313	6FT	28W	3640Lms	5000K	100-277V	>80	TypeB	R17D	Frosted
330	8FT	40W	5600Lms	5000K	100-277V	>80	TypeB	FA8	Clear
331	8FT	40W	5600Lms	5000K	100-277V	>80	TypeB	FA8	Frosted
332	8FT	40W	5600Lms	6500K	100-277V	>80	TypeB	FA8	Clear
333	8FT	40W	5600Lms	6500K	100-277V	>80	TypeB	FA8	Frosted
334	8FT	40W	5600Lms	5000K	100-277V	>80	TypeB	R17D	Clear
335	8FT	40W	5600Lms	5000K	100-277V	>80	TypeB	R17D	Frosted
340	8FT	40W	5600Lms	30/40/50/65K	100-277V	>80	TypeB	FA8	Clear
341	8FT	40W	5600Lms	30/40/50/65K	100-277V	>80	TypeB	FA8	Frosted
342	8FT	40W	5600Lms	30/40/50/65K	100-277V	>80	TypeB	R17D	Clear
343	8FT	40W	5600Lms	30/40/50/65K	100-277V	>80	TypeB	R17D	Frosted

### TOMBSTONE- LAMP HOLDER



G13 - T8  
LAMP HOLDER

1080



FA8 - SINGLE PIN  
LAMP HOLDER

1081



SINGLE PIN  
LAMP HOLDER

1082



R17D  
LAMP HOLDER

1083

Code	Descriptions
S4-232	4FT LED Strip Fixture (LED Ready) for 2*4FT Tubes
S8-259	8FT LED Strip Fixture (LED Ready) for 2*8FT Tubes
S8-432	8FT LED Strip Fixture (LED Ready) for 4*4FT Tubes

#### 8 FT. FIXTURE ACCS



1084

T8 Conversion Kit.  
One 8ft bulb to  
two 4ft bulbs.





### LED T5 TUBES U-SHAPE TUBES EMERGENCY TUBES



#### T-5 TUBES

Code	Size	Wattage	Lumens	CCT	Voltage	CRI	Wiring	Lens
326	4FT	24W	3120Lms	4000K	100-277V	>80	TypeB	Frosted
328	4FT	24W	3120Lms	5000K	100-277V	>80	TypeB	Frosted



#### U-Shape Tubes (U6)

Code	Size	Wattage	Lumens	CCT	Voltage	CRI	Wiring	Lens
350	2FT/U6	15W	1950Lms	4000K	100-277V	>80	TypeAB	Frosted
351	2FT/U6	15W	1950Lms	5000K	100-277V	>80	TypeAB	Frosted



#### U-Shape Tubes (U1)

Code	Size	Wattage	Lumens	CCT	Voltage	CRI	Wiring	Lens
352	2FT/U1	15W	1950Lms	4000K	100-277V	>80	TypeAB	Frosted
353	2FT/U1	15W	1950Lms	5000K	100-277V	>80	TypeAB	Frosted



#### LED Emergency Tube

Code	Size	Wattage	Lumens	CCT	Voltage	CRI	Wiring	Lens
327	4FT	15W	1950Lms	30/40/50K	100-277V	>80	TypeB	Frosted



### LED INTEGRATED TUBES



2 FT - 3 FT - 4FT - 5FT - 6FT - 8FT

Code	Size	Wattage	Lumens	CCT	Voltage	CRI	Lens
260	2FT	10W	1400Lms	5000K	100-277V	>80	Clear
261	2FT	10W	1400Lms	6500K	100-277V	>80	Frosted
262	3FT	20W	2800Lms	5000K	100-277V	>80	Clear
281	3FT	20W	2800Lms	5000K	100-277V	>80	Frosted
263	3FT	20W	2800Lms	6500K	100-277V	>80	Clear
264	4FT	30W	4200Lms	5000K	100-277V	>80	Clear
265	4FT	30W	4200Lms	6500K	100-277V	>80	Clear
266	4FT	30W	4200Lms	5000K	100-277V	>80	Frosted
267	4FT	30W	4200Lms	6500K	100-277V	>80	Frosted
268	5FT	40W	5600Lms	5000K	100-277V	>80	Clear
269	5FT	40W	5600Lms	6500K	100-277V	>80	Clear
270	6FT	48W	6720Lms	5000K	100-277V	>80	Clear
271	6FT	48W	6720Lms	6500K	100-277V	>80	Clear
272	8FT	60W	8400Lms	5000K	100-277V	>80	Clear
273	8FT	60W	8400Lms	6500K	100-277V	>80	Clear
274	8FT	60W	8400Lms	5000K	100-277V	>80	Frosted
275	8FT	60W	8400Lms	6500K	100-277V	>80	Frosted
276	8FT	72W	10080Lms	6500K	100-277V	>80	Clear
286	2FT	10W	1400Lms	30/40/50/65K	100-277V	>80	Clear
287	2FT	10W	1400Lms	30/40/50/65K	100-277V	>80	Frosted
288	3FT	20W	2800Lms	30/40/50/65K	100-277V	>80	Clear
289	3FT	20W	2800Lms	30/40/50/65K	100-277V	>80	Frosted
277	4FT	30W	4200Lms	30/40/50/65K	100-277V	>80	Clear
278	4FT	30W	4200Lms	30/40/50/65K	100-277V	>80	Frosted
279	5FT	40W	5600Lms	30/40/50/65K	100-277V	>80	Clear
280	5FT	40W	5600Lms	30/40/50/65K	100-277V	>80	Frosted
282	6FT	48W	6720Lms	30/40/50/65K	100-277V	>80	Clear
283	6FT	48W	6720Lms	30/40/50/65K	100-277V	>80	Frosted
284	8FT	60W	8400Lms	30/40/50/65K	100-277V	>80	Clear
285	8FT	60W	8400Lms	30/40/50/65K	100-277V	>80	Frosted

### ACCESSORIES



**1090**

Power Cord  
with On/off Switch

### LINEAR STRIP LIGHTS



**Application:**

- Bathroom**
- Office**
- Factory**
- Bus/subway/train station**



**V385**  
**20/30/40W**

4 ft.  
3 Wattages Selectable, Lumens: Up to 5200Lms  
3CCT: 30/40/50K, CRI:>80  
Input Voltage:100-277V, Housing: White



**V387**  
**20/30/40W**

4 ft.  
3 Wattages Selectable, Lumens: Up to 5200Lms  
3CCT: 30/40/50K, CRI:>80  
Input Voltage:100-277V, Housing: White  
Emergency Battery Backup



**V386**  
**70/80/90W**

8 ft.  
3 Wattages Selectable, Lumens: Up to 11700Lms  
3CCT: 30/40/50K, CRI:>80  
Input Voltage:100-277V, Housing: White



**V388**  
**70/80/90W**

8 ft.  
3 Wattages Selectable, Lumens: Up to 11700Lms  
3CCT: 30/40/50K, CRI:>80  
Input Voltage:100-277V, Housing: White  
Emergency Battery Backup

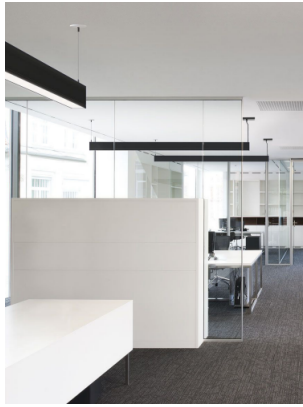
### ACCESSORIES



Harvesting Daylight /w  
Sensor Motion Level Bi  
Control Remote- sensor  
external /w Version  
Detachable  
Compatible



### LED ARCHITECTURAL LIGHTS



Ideal for, retail locations, offices, lobbies, conference rooms, reception areas, hallways, educational facilities, hotels, and restaurants



**L433**

**25/30/36W**

4 FT

3wattages Selectable  
Lumens: Up to 4680Lms  
3CCT: 35/40/50K  
Input Voltage:100-277V CRI:>80  
Housing: White  
Lighting Distribution:  
Up30% & Down70%



**L434**

**30/50/72W**

8 FT

3wattages Selectable  
Lumens: Up to 4680Lms  
3CCT: 35/40/50K  
Input Voltage:100-277V CRI:>80  
Housing: White  
Lighting Distribution:  
Up30% & Down70%

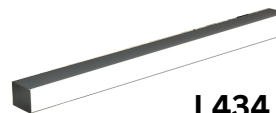


**L433**

**25/30/36W**

4 FT

3wattages Selectable  
Lumens: Up to 4680Lms  
3CCT: 35/40/50K  
Input Voltage:100-277V CRI:>80  
Housing: Black  
Lighting Distribution:  
Up30% & Down70%



**L434**

**30/50/72W**

8 FT

3wattages Selectable  
Lumens: Up to 4680Lms  
3CCT: 35/40/50K  
Input Voltage:100-277V CRI:>80  
Housing: Black  
Lighting Distribution:  
Up30% & Down70%

## ACCESSORIES



Joint Type: X

**439**



Joint Type: L

**440**



Joint Type: T

**441**

## LED TRACK LIGHTS



### APPLICATIONS

- Residential
- Retail Space
- Office
- Hospitality
- Lobbies
- Art Galleries
- Museums



### TRACK HEADS



816

**30W**

Lumens: Up to 3000Lms  
5CCT: 27/3035/40/50K  
Input Voltage:120V CRI:>90  
Housing: White  
Beam angle: 24/36/60



817

**30W**

Lumens: Up to 3000Lms  
5CCT: 27/3035/40/50K  
Input Voltage:120V CRI:>90  
Housing: Black  
Beam angle: 24/36/60



812

**11W**

Work with Par30 LED Bulb 11W  
Lumens: Up to 700Lms  
CCT: 5000K  
Input Voltage:120V CRI:>90  
Housing: White



813

**11W**

Work with Par30 LED Bulb 11W  
Lumens: Up to 700Lms  
CCT: 5000K  
Input Voltage:120V CRI:>90  
Housing: Black

### 8 FT TRACK



810

8FT Track White



811

8FT Track Black

### ACCESSORIES



814



815



818



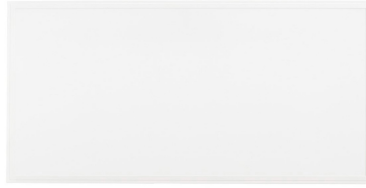
819

### LED PANEL LIGHT



#### APPLICATIONS

- Lobbies
- Art Galleries
- Museums



#### LED PANEL FOR RECESSED

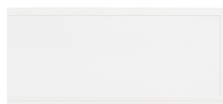


V358

**2x2ft**

30/35/40/45/50W

5 Wattages Selectable  
Lumens: Up to 6500Lms  
5CCT:30/40/50/57/65K  
Input Voltage:100-277V  
CRI:>80 0-10V dimming

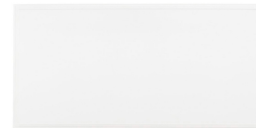


V459

**1x4ft**

30/35/40/45/50W

5 Wattages Selectable  
Lumens: Up to 6500Lms  
5CCT:30/40/50/57/65K  
Input Voltage:100-277V  
CRI:>80 0-10V dimming



V432

**2x4ft**

40/50/55/60/72W

5 wattages Selectable  
Lumens: Up to 9360Lms  
5CCT:30/40/50/57/65K  
Input Voltage:100-277V  
CRI:>80 0-10V dimming

#### LED SURFACE MOUNT PANEL



V358

**2x2ft**

**40 W**

Lumens:4000Lms  
3CCT:30/40/50K  
Input Voltage:100-277V  
CRI:>80 0-10V dimming

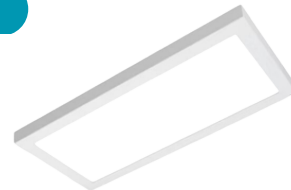


V459

**1x4ft**

**40 W**

Lumens:4000Lms  
3CCT:30/40/50K  
Input Voltage:100-277V  
CRI:>80 0-10V dimming



V432

**2x4ft**

**50 W**

Lumens: 5000Lms  
5CCT:30/40/50K  
Input Voltage:100-277V  
CRI:>80 0-10V dimming

#### LED SURFACE MOUNTING FRAME



Code	Size
446	2*2
448	1*4
447	2*4

#### FLANGE KIT SURFACE MOUNT



Code	Size
449	2*2
451	1*4
450	2*4

#### ACCESSORIES



**Emergency LED Driver**

20 Watt, Up to 90 Min. of Operation in case of Emergency.

**1101**

## LED TROFFERS



### APPLICATIONS

- Factory
- Office Building
- Shopping Center
- Residential Lighting



### LED TROFFER



**L460**  
**2x2ft**  
**30/35/40W**

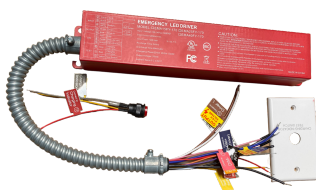
3 Wattages Selectable  
Lumens: Up to 5000Lms  
3CCT:35/40/50K  
Input Voltage:100-277V  
CRI:>80 0-10V dimming



**L463**  
**2x4ft**  
**34/38/45W**

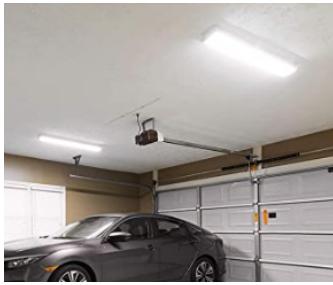
3 Wattages Selectable  
Lumens: Up to 5620Lms  
3CCT:35/40/50K  
Input Voltage:100-277V  
CRI:>80 0-10V dimming

### ACCESSORIES



**1101**

### LED WRAP AROUND



#### APPLICATIONS

- Factory
- Office Building
- Shopping Center
- Residential Lighting



### LED WRAPAROUND



**L396**

**4FT\*5"Wide**

**32/40/48W**

3 wattages Selectable  
Lumens: Up to 5616Lms  
5CCT:30/40/50K  
Input Voltage:100-277V  
CRI:>80 0-10V dimming



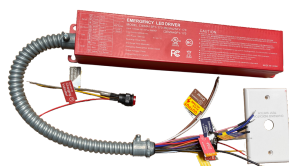
**L397**

**4FT\*9"Wide**

**60W**

Lumens:7200Lms  
CCT:5000K  
Input Voltage:100-277V  
CRI:>80 0-10V dimming

### ACCESSORIES



**1100**

**Emergency LED Driver**



## LED HIGH BAY



### APPLICATIONS

- Residential
- Retail Space
- Office
- Hospitality
- Lobbies
- Art Galleries
- Museums



### UFO HIGH BAY



**L616**

**100/120/150W**

3 Wattages Selectable  
Lumens: Up to 23250Lms  
2CCT:4000/5000K  
Input Voltage:100-277V  
CRI:>80 0-10V dimming



**L615**

**180/200/240W**

3 Wattages Selectable  
Lumens: Up to 37200Lms  
2CCT:4000/5000K  
Input Voltage:100-277V  
CRI:>80 0-10V dimming

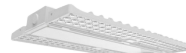
### COMPACT HIGH BAY



**L624**

**80/100/130W**

3 Wattages Selectable  
Lumens: Up to 19500Lms  
CCT:5000K  
Input Voltage:100-277V  
CRI:>80 0-10V dimming



**L623**

**130/180/210W**

3 wattages Selectable  
Lumens: Up to 31500Lms  
CCT:5000K  
Input Voltage:100-277V  
CRI:>80 0-10V dimming

### COMPACT HIGH BAY



**L517**

**225W**

Lumens: 29250Lms  
CCT:5000K  
Input Voltage:100-277V  
CRI:>80 0-10V dimming



**L625**

**300W**

Lumens: 36000Lms  
CCT:5000K  
Input Voltage:100-277V  
CRI:>80 0-10V dimming

### DEFORMABLE HIGH BAY



**1023**

**150W**

Lumens: 19500Lms  
CCT:5000K  
Input Voltage:100-277V  
CRI:>80

### ACCESSORIES



Emergency LED Driver  
20 Watt, Up to 90 Min.  
of Operation in case  
of Emergency.

**1104**



40W  
Emergency Backup  
for UFO High bay

### LED RECESSED LIGHTS



#### ROUND



**L480**  
4"

Wattage: 9W  
Lumens:720Lms  
5CCT:27/30/35/40/50K  
Input Voltage:120V  
CRI:>90 Dimmable



**L483**  
5/6"

Wattage: 12W  
Lumens:1000Lms  
5CCT:27/30/35/40/50K  
Input Voltage:120V CRI:>90  
Dimmable



**L493**  
5/6"

Wattage: 12/15/18W  
Lumens:Up to 1650Lms  
5CCT:27/30/35/40/50K  
Input Voltage:120V CRI:>90  
Dimmable



**L494**  
5/6"

Wattage: 15W  
CCT:RGBW  
Input Voltage:120V CRI:>90  
Dimmable



**L496**  
4"

Wattage: 10W  
Lumens:750Lms  
5CCT:27/30/35/40/50K  
Input Voltage:120V  
CRI:>90 Dimmable  
Housing: White



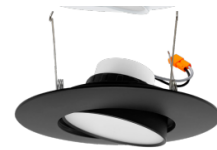
**L495**  
4"

Wattage: 12W  
Lumens:1000Lms  
5CCT:27/30/35/40/50K  
Input Voltage:120V  
CRI:>90  
Dimmable  
Housing: Black



**L497**  
5/6"

Wattage: 16.5W  
Lumens:1200Lms  
5CCT:27/30/35/40/50K  
Input Voltage:120V  
CRI:>90 Dimmable  
Housing: White



**L498**  
5/6"

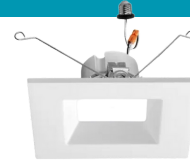
Wattage: 16.5W  
Lumens:1200Lms  
5CCT:27/30/35/40/50K  
Input Voltage:120V  
CRI:>90 Dimmable  
Housing: Black

#### SQUARE



**L478**  
4"

Wattage: 11W  
Lumens:750Lms  
5CCT:27/30/35/40/50K  
Input Voltage:120V CRI:>90  
Dimmable



**L479**  
6"

Wattage: 14W  
Lumens:110Lms  
5CCT:27/30/35/40/50K  
Input Voltage:120V CRI:>90  
Dimmable

#### NEW CONSTRUCTION



4 " New Construction  
**L496**



6 " New Construction  
**L495**

#### REMODEL

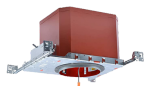


4 " Remodel  
**1032**



6 " Remodel  
**1033**

#### NEW CONSTRUCTION (FIRE RATED)



4" FIRE RATED  
New Construction

**1034**



6" FIRE RATED  
New Construction

**1035**

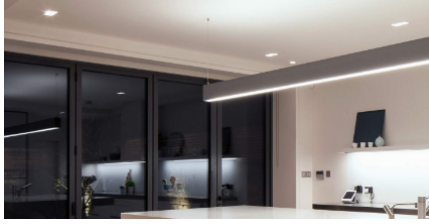
#### ACCESSORIES



**1103**

25W Emergency Backup

### LED DISK LIGHTS



#### APPLICATIONS

- Residential
- Lighting Commercial
- Lighting Recessed
- Lighting Indoor General



#### LED DISK LIGHTS



**L620**  
4"

Wattage: 10W  
Lumens: 650Lms  
5CCT: 27/30/35/40/50K  
Input Voltage: 120V CRI: >90  
Dimmable



**L621**  
6"

Wattage: 15W  
Lumens: 1000Lms  
5CCT: 27/30/35/40/50K  
Input Voltage: 120V CRI: >90  
Dimmable



**L622**  
8"

Wattage: 18W  
Lumens: 1400Lms  
5CCT: 27/30/35/40/50K  
Input Voltage: 120V CRI: >90  
Dimmable

#### LED DISK LIGHTS



**L623**  
4"

Wattage: 10W  
Lumens: 650Lms  
5CCT: 27/30/35/40/50K  
Input Voltage: 120V  
CRI: >90 Dimmable  
with Motion Sensor



**L624**  
6"

Wattage: 15W  
Lumens: 1000Lms  
5CCT: 27/30/35/40/50K  
Input Voltage: 120V  
CRI: >90 Dimmable  
With Motion Sensor

#### ACCESSORIES



1103

## LED CANLESS DOWNLIGHTS

### APPLICATIONS

- Residential
- Retail Space
- Office
- Hospitality
- Lobbies
- Art Galleries
- Museums



### LED CANLESS - SMOOTH



L509

4"  
12W

Lumens: 1000Lms  
5CCT: 27/30/35/40/50K  
Input Voltage: 120V CRI: >90  
dimming



L510

6"  
15W

Lumens: 1100Lms  
5CCT: 27/30/35/40/50K  
Input Voltage: 120V CRI: >90  
dimming



L511

8"  
22W

Lumens: 1600Lms  
5CCT: 27/30/35/40/50K  
Input Voltage: 120V CRI: >90  
dimming

### LED CANLESS - BAFFLE



L512

4"  
10W

Lumens: 650Lms  
5CCT: 27/30/35/40/50K  
Input Voltage: 120V  
CRI: >90 Dimmable



L513

6"  
12W

Lumens: 900Lms  
5CCT: 27/30/35/40/50K  
Input Voltage: 120V  
CRI: >90 Dimmable



L514

4"  
10W

Lumens: 650Lms  
5CCT: 27/30/35/40/50K  
Input Voltage: 120V  
CRI: >90 Dimmable



L515

6"  
15W

Lumens: 1100Lms  
5CCT: 27/30/35/40/50K  
Input Voltage: 120V  
CRI: >90 Dimmable

### LED CANLESS - GIMBLE



L481

3"  
6W

Lumens: 370Lms  
5CCT: 27/30/35/40/50K  
Input Voltage: 120V  
CRI: >90 Dimmable



L482

4"  
9W

Lumens: 540Lms  
5CCT: 27/30/35/40/50K  
Input Voltage: 120V  
CRI: >90 Dimmable



L485

4"  
8W

Lumens: 500Lms  
5CCT: 27/30/35/40/50K  
Input Voltage: 120V  
CRI: >90 Dimmable



L486

6"  
12W

Lumens: 800Lms  
5CCT: 27/30/35/40/50K  
Input Voltage: 120V  
CRI: >90 Dimmable



L486

3"  
6W

Lumens: 345Lms  
5CCT: 27/30/35/40/50K  
Input Voltage: 120V CRI: >90  
Dimmable



L487

4"  
9W

Lumens: 540Lms  
5CCT: 27/30/35/40/50K  
Input Voltage: 120V CRI: >90  
Dimmable



L488

6"  
12W

Lumens: 800Lms  
5CCT: 27/30/35/40/50K  
Input Voltage: 120V CRI: >90  
Dimmable

### ACCESSORIES



1103

25W Emergency Backup



1040

3/4" Mount Plate with  
Hanger Bar for Canless  
Downlight



1041

Mount Plate  
for Canless Downlight



1050 6" Groof Ring

1051 8" Groof Ring

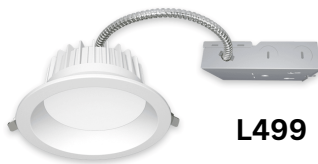
## LED COMMERCIAL DOWNLIGHTS

### APPLICATIONS

- Residential
- Retail Space
- Office
- Hospitality
- Lobbies
- Art Galleries
- Museums



### COMMERCIAL CANLESS



**L499**

**6"**  
**25W**

Lumens: 2000Lms  
3CCT:30/40/50K  
Input Voltage:100-277V CRI:>90  
dimming



**L501**

**8"**  
**25W**

Lumens: 2000Lms  
3CCT:30/40/50K  
Input Voltage:100-277V CRI:>90  
dimming

### COMMERCIAL SPLIT



**L490**

**4"**  
**20W**

Lumens: 1800Lms  
3CCT:30/40/50K  
Input Voltage:100-277V CRI:>90  
0-10V dimming



**L491**

**6"**  
**20W**

Lumens: 1800Lms  
3CCT:30/40/50K  
Input Voltage:100-277V CRI:>90  
0-10V dimming



**L492**

**8"**  
**20W**

Lumens: 1800Lms  
3CCT:30/40/50K  
Input Voltage:100-277V CRI:>90  
0-10V dimming

### COMMERCIAL CANLESS



**L504**

**4"**  
**12W**

Lumens: 960Lms  
3CCT:30/40/50K  
Input Voltage:100-277V  
CRI:>90 0-10V dimming



**L505**

**6"**  
**33W**

Lumens: 2640Lms  
3CCT:30/40/50K  
Input Voltage:100-277V  
CRI:>90 0-10V dimming



**L506**

**8"**  
**22W**

Lumens: 1760Lms  
3CCT:30/40/50K  
Input Voltage:100-277V  
CRI:>90 0-10V dimming



**L507**

**10"**  
**33W**

Lumens: 1800Lms  
3CCT:30/40/50K  
Input Voltage:100-277V  
CRI:>90 0-10V dimming



### LED CEILING LIGHTS

#### APPLICATIONS

- Lobbies
- Art Galleries
- Residential



#### ROUND - SURFACE MOUNT



L517

7"

15W

Lumens: 1000Lms  
5CCT:27/30/35/40/50K  
Input Voltage:120V  
CRI:>90 dimming



L518

12"

22W

Lumens: 1450Lms  
5CCT:27/30/35/40/50K  
Input Voltage:120V  
CRI:>90 dimming



L516

15"

30W

Lumens: 2000Lms  
5CCT:27/30/35/40/50K  
Input Voltage:120V  
CRI:>90 dimming

#### ROUND - SURFACE MOUNT



L522

7"

15W

Lumens: 1000Lms  
5CCT:27/30/35/40/50K  
Input Voltage:120V  
CRI:>90 dimming



V520

9"

18W

Lumens: 1440Lms  
5CCT:27/30/35/40/50K  
Input Voltage:120V  
CRI:>90 dimming



V519

12"

22W

Lumens: 1600Lms  
5CCT:27/30/35/40/50K  
Input Voltage:120V  
CRI:>90 dimming

#### ROUND - DOUBLE RING



L521

14"

25W

Lumens: 1600Lms  
5CCT:27/30/40/50/60K  
Input Voltage:120V  
CRI:>90 dimming

### LED WALL SCONCES



#### APPLICATIONS

- Lobbies
- Art Galleries
- Residential



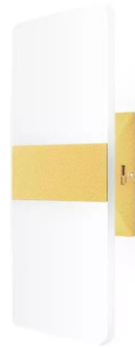
#### RECTANGULAR



**L950**

**12W**

Lumens: 1080Lms  
5CCT:27/30/40/50/60K  
Input Voltage:120V  
CRI:>90  
Dimmable  
Silver



**L951**

**12W**

Lumens: 1080Lms  
5CCT:27/30/40/50/60K  
Input Voltage:120V  
CRI:>90  
Dimmable  
Brass

#### HALF MOON



**L953**

**15W**

with A19 LED Bulb  
Lumens: 1100Lms  
CCT:2700K  
Input Voltage:120V  
CRI:>90  
Dimmable



**L954**

**15W**

with A19 LED Bulb  
Lumens: 1100Lms  
CCT:3000K  
Input Voltage:120V  
CRI:>90  
Dimmable



**L955**

**15W**

with A19 LED Bulb  
Lumens: 1100Lms  
CCT:2700K  
Input Voltage:120V  
CRI:>90  
Dimmable



**L956**

**15W**

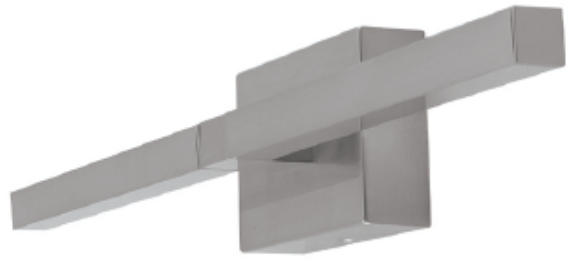
with A19 LED Bulb  
Lumens: 1100Lms  
CCT:3000K  
Input Voltage:120V  
CRI:>90  
Dimmable

### LED VANITY LIGHTS

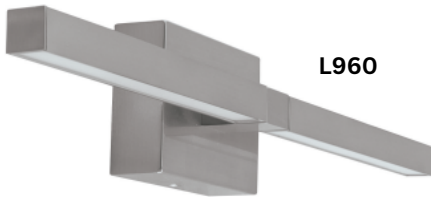
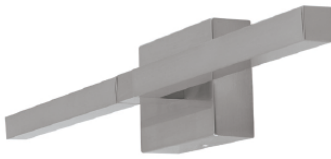


#### APPLICATIONS

- Hotels
- Office
- Home
- Restaurant



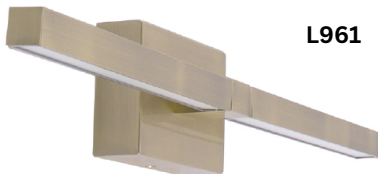
#### ROTATABLE



**L960**

**20W**

Lumens: 1400Lms  
 5CCT:27/30/35/40/50K  
 Input Voltage:120V CRI:>90  
 Dimmable  
 Rotatable  
 Color: Silver



**L961**

**20W**

Lumens: 1400Lms  
 5CCT:27/30/35/40/50K  
 Input Voltage:120V CRI:>90  
 Dimmable  
 Rotatable  
 Color: Brass

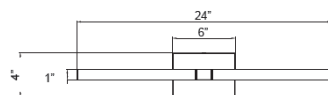


**L961**

**20W**

Lumens: 1400Lms  
 5CCT:27/30/35/40/50K  
 Input Voltage:120V CRI:>90  
 Dimmable  
 Rotatable  
 Color: Black

#### DIMENSIONS



24"(W) x 4"(H)



## LED BULBS



**A19**

Code	Wattage	CCT	Lumens
L1201	9W	2700K	800lms
L1202	9W	3000K	800lms
L1203	9W	4000K	800lms
L1204	9W	5000K	800lms

**A19**

Code	Wattage	CCT	Lumens
L1205	15W	2700K	1600lms
L1206	15W	3000K	1600lms
L1207	15W	4000K	1600lms
L1208	15W	5000K	1600lms

**A19 GU24 Base**

Code	Wattage	CCT	Lumens
L1229	9W	2700K	800lms
L1230	9W	3000K	800lms
L1231	9W	4000K	800lms
L1232	9W	5000K	800lms

**A21**

Code	Wattage	CCT	Lumens
L1209	22W	2700K	2550lms
L1210	22W	3000K	2550lms
L1211	22W	4000K	2550lms
L1212	22W	5000K	2550lms

**BR30**

Code	Wattage	CCT	Lumens
L1213	11W	2700K	850lms
L1214	11W	3000K	850lms
L1215	11W	4000K	850lms
L1216	11W	5000K	850lms

**BR40**

Code	Wattage	CCT	Lumens
L1217	17W	2700K	1400lms
L1218	17W	3000K	1400lms
L1219	17W	4000K	1400lms
L1220	17W	5000K	1400lms

**PAR30**

Code	Wattage	CCT	Lumens
L1221	11W	2700K	850lms
L1222	11W	3000K	850lms
L1223	11W	4000K	850lms
L1224	11W	5000K	850lms

**PAR38**

Code	Wattage	CCT	Lumens
L1225	20W	2700K	1400lms
L1226	20W	3000K	1400lms
L1227	20W	4000K	1400lms
L1228	20W	5000K	1400lms

**MR16**

Code	Wattage	CCT	Lumens
L1233	7W	2700K	500lms
L1234	7W	3000K	500lms
L1235	7W	4000K	500lms
L1236	7W	5000K	500lms

**GU10**

Code	Wattage	CCT	Lumens
L1237	7W	2700K	450lms
L1238	7W	3000K	450lms
L1239	7W	4000K	450lms
L1240	7W	5000K	450lms

**B10**

Code	Wattage	CCT	Lumens
L1241	5.5W	2200K	500lms
L1242	5.5W	2700K	500lms
L1243	5.5W	3000K	500lms
L1244	5.5W	5000K	500lms

**BA10**

Code	Wattage	CCT	Lumens
L1245	5.5W	2200K	500lms
L1246	5.5W	2700K	500lms



1060



1061

### LED PL LAMPS



#### APPLICATIONS

- Residential
- Retail Space
- Office
- Hospitality
- Lobbies
- Art Galleries
- Museums



#### GX24 Vertical



Code	Wattage	CCT	Lumens
L1280	12W	3000K	960lms
L1281	12W	4000K	960lms
L1282	12W	5000K	960lms

#### GX24 Horizontal



Code	Wattage	CCT	Lumens
L1283	12W	3000K	960lms
L1284	12W	4000K	960lms
L1285	12W	5000K	960lms

#### GX23



Code	Wattage	CCT	Lumens
L1286	7W	3000K	960lms
L1287	7W	4000K	960lms
L1288	7W	5000K	960lms



### LED CORN BULBS



#### APPLICATIONS

Ideal for retrofitting  
Canopy, wall  
pack, floodlight



**V160**

**18W**

Lumens: 2790Lms  
CCT:5000K CRI:>80  
Input Voltage:100-277  
1-10V dimming  
Base: E26  
Dimension:  
Diameter 2.36  
Length 6.4"



**V161**

**27W**

Lumens: 4185 Lms  
CCT:5000K CRI:>80  
Input Voltage:100-277  
1-10V dimming  
Base: E26  
Dimension:  
Diameter 2.36  
Length 8.8"



**V162**

**40W**

Lumens: 6200 Lms  
CCT:5000K CRI:>80  
Input Voltage:100-277  
1-10V dimming  
Base: E26  
Dimension:  
Diameter 3.46"  
Length 8.26"



**V163**

**42/60W**

Lumens: Up to 9300Lms  
CCT:4000/5000K CRI:>80  
Input Voltage:100-277V  
1-10V dimming  
Base: E39  
Dimension:  
Diameter:3.46\*  
Length:9.68"



**V164**

**72/100W**

Lumens: Up to 9300Lms  
CCT:4000/5000K CRI:>80  
Input Voltage:100-277V  
1-10V dimming  
Base: E39  
Dimension:  
Diameter:3.46\*  
Length:9.68"



**V165**

**80/120W**

Lumens: Up to 9300Lms  
CCT:4000/5000K CRI:>80  
Input Voltage:100-277V  
1-10V dimming  
Base: E39  
Dimension:  
Diameter:3.46\*  
Length:9.68"



**L148**

**54W**

Lumens: 7020Lms  
CCT:5000K CRI:>80  
Input Voltage:100-277V  
Base: E39  
Dimension:  
9.56"x4.48"x3.15"



**L149**

**75W**

Lumens: 9750Lms  
CCT:5000K CRI:>80  
Input Voltage:100-277V  
Base: E39  
Dimension:  
11.69"x5.43"x3.15"



**L157**

**115W**

Lumens: 9750Lms  
CCT:5000K CRI:>80  
Input Voltage:100-277V  
Base: E39  
Dimension:  
11.69"x5.43"x3.15"

#### ACCESSORIES



**L157**

E39 -E39 EXTENSION



**L157**

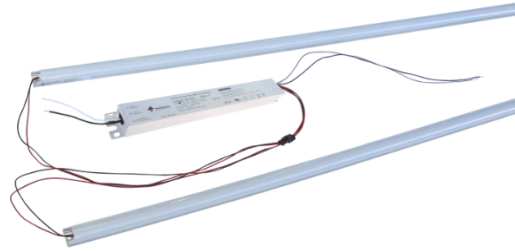
E39 -E26 ADAPTER



**L157**

E26 -E39 ADAPTER

### LED MAGNET STRIPS



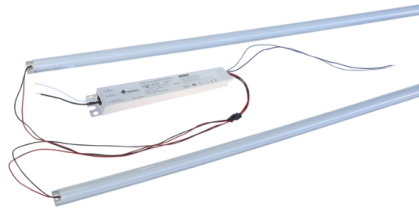
#### APPLICATIONS

- Residential
- Retail Space
- Office
- Hospitality
- Lobbies
- Art Galleries



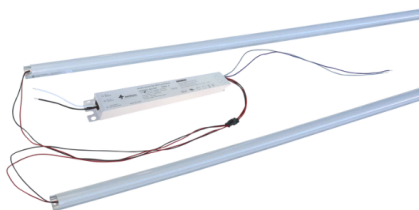
#### 2 FEET RETROFIT 25W

**25W**  
**2 Strips with 1 Driver**  
**Lumens: 3500Lms**  
**CCT:5000K**  
**0-10V Dimming**  
**Magnet on Strips and driver**



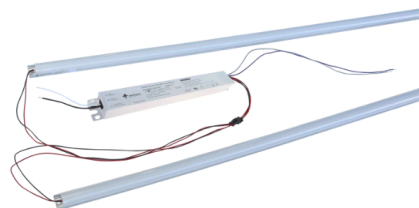
#### 4 FEET RETROFIT 36W

**36W**  
**2 Strips with 1 Driver**  
**Lumens: 5040Lms**  
**CCT:5000K**  
**0-10V Dimming**  
**Magnet on Strips and driver**



#### 4 FEET RETROFIT 50W

**50W**  
**2 Strips with 1 Driver**  
**Lumens: 7000Lms**  
**CCT:5000K**  
**0-10V Dimming**  
**Magnet on Strips and driver**



### MIRROR LIGHT 3CCT



M1400

20\*28"  
3CCT:30/40/50K  
Defog  
Dimmable  
Touch Sensor  
M1400



M1401

24\*32"  
3CCT:30/40/50K  
Defog  
Dimmable  
Touch Sensor  
M1401



M1402

24\*36"  
3CCT:30/40/50K  
Defog  
Dimmable  
Touch Sensor  
M1402



M1403

28\*36"  
3CCT:30/40/50K  
Defog  
Dimmable  
Touch Sensor  
M1403



M1404

24\*40"  
3CCT:30/40/50K  
Defog  
Dimmable  
Touch Sensor



M1405

36\*36"  
3CCT:30/40/50K  
Defog  
Dimmable  
Touch Sensor



M1406

32\*40"  
3CCT:30/40/50K  
Defog  
Dimmable  
Touch Sensor



M1407

32\*48"  
3CCT:30/40/50K  
Defog  
Dimmable  
Touch Sensor



M1408

36\*48"  
3CCT:30/40/50K  
Defog  
Dimmable  
Touch Sensor



M1409

30\*55"  
3CCT:30/40/50K  
Defog  
Dimmable  
Touch Sensor



1410

28\*60"  
3CCT:30/40/50K  
Defog  
Dimmable  
Touch Sensor



1411

36\*60"  
3CCT:30/40/50K  
Defog  
Dimmable  
Touch Sensor

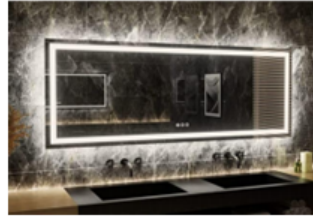
### MIRROR LIGHT 3CCT



**M1412**

**32\*72"**

3CCT:30/40/50K  
Defog  
Dimmable  
Touch Sensor



**M1413**

**32\*84"**

3CCT:30/40/50K  
Defog  
Dimmable  
Touch Sensor



**M1414**

**36\*96"**

3CCT:30/40/50K  
Defog  
Dimmable  
Touch Sensor



**M1415**

**36\*48"**

2CCT:5000/6000K  
Defog  
Dimmable  
Direct Wiring



**M1416**

**24\*24"**

3CCT:30/40/50K  
Defog  
Dimmable  
Touch Sensor



**M1417**

**32\*32"**

3CCT:30/40/50K  
Defog  
Dimmable  
Touch Sensor



**M1418**

**24\*32"**

3CCT:30/40/50K  
Defog  
Dimmable  
Touch Sensor

## MIRROR LIGHT RGBW



M1419

20\*28"  
CCT:RGB+White  
Defog  
Dimmable  
Touch Sensor



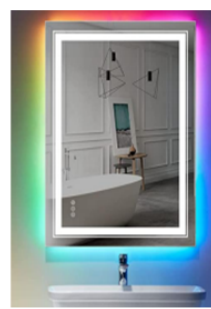
M1420

24\*32"  
CCT:RGB+White  
Defog  
Dimmable  
Touch Sensor



M1421

24\*36"  
CCT:RGB+White  
Defog  
Dimmable  
Touch Sensor



M1422

28\*36"  
CCT:RGB+White  
Defog  
Dimmable  
Touch Sensor



M1423

24\*40"  
CCT:RGB+White  
Defog  
Dimmable  
Touch Sensor



M1424

36\*36"  
CCT:RGB+White  
Defog  
Dimmable  
Touch Sensor



M1425

32\*40"  
CCT:RGB+White  
Defog  
Dimmable  
Touch Sensor



M1426

32\*48"  
CCT:RGB+White  
Defog  
Dimmable  
Touch Sensor



M1427

36\*48"  
CCT:RGB+White  
Defog  
Dimmable  
Touch Sensor



M1428

30\*55"  
CCT:RGB+White  
Defog  
Dimmable  
Touch Sensor



M1429

28\*60"  
CCT:RGB+White  
Defog  
Dimmable  
Touch Sensor



M1430

36\*60"  
CCT:RGB+White  
Defog  
Dimmable  
Touch Sensor



M1431

32\*72"  
CCT:RGB+White  
Defog  
Dimmable  
Touch Sensor



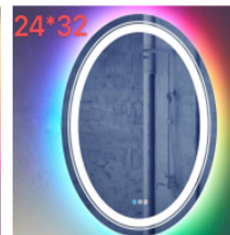
M1432

36\*72"  
CCT:RGB+White  
Defog  
Dimmable  
Touch Sensor



M1433

32\*84"  
CCT:RGB+White  
Defog  
Dimmable  
Touch Sensor



M1434

24\*32"  
CCT:RGB+White  
Defog  
Dimmable  
Touch Sensor

### LED COOLER LIGHTS



#### APPLICATIONS

IP65 Rated High Lumen LED Light for use in Commercial Refrigerators and Freezers



#### 4 ft COOLER LIGHT



V354

##### 4FT 18W

CCT:5000K  
Lumens: 3060Lms  
Input Voltage:100-277V  
CRI:>80 IP65  
V-Shape: Beam  
Angle:270  
Daisy-chain Installation



V354

##### 4FT 18W

CCT:6500K  
Lumens: 3060Lms  
Input Voltage:100-277V  
CRI:>80 IP65  
V-Shape: Beam  
Angle:270  
Daisy-chain Installation

#### 5 ft COOLER LIGHT



V356

##### 5FT 22W

CCT:5000K  
Lumens: 3740Lms  
Input Voltage:100-277V  
CRI:>80 IP65  
V-Shape:Beam Angle:270  
Daisy-chain Installation



V357

##### 5FT 22W

CCT:6500K  
Lumens: 3740Lms  
Input Voltage:100-277V  
CRI:>80 IP65  
V-Shape:Beam Angle:270  
Daisy-chain Installation

#### 6 ft COOLER LIGHT



V358

##### 6FT 30W

CCT:5000K  
Lumens: 5100Lms  
Input Voltage:100-277V  
CRI:>80 IP65  
V-Shape:Beam Angle:270  
Daisy-chain Installation



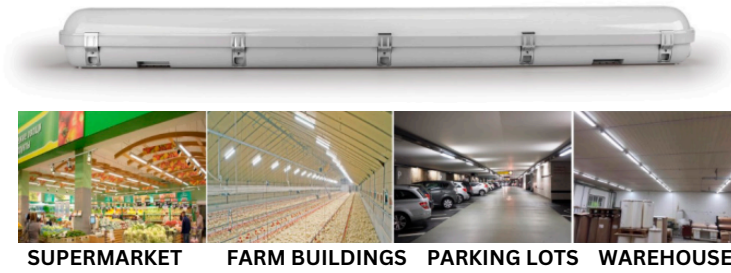
V359

##### 6FT 30W

CCT:6500K  
Lumens: 5100Lms  
Input Voltage:100-277V  
CRI:>80 IP65  
V-Shape: Beam Angle:270  
Daisy-chain Installation



### LED VAPOR LIGHTS



SUPERMARKET FARM BUILDINGS PARKING LOTS WAREHOUSE

#### APPLICATIONS

- Wet Areas
- Outdoor Walkways
- Warehouse
- Storage Areas
- Farm Buildings



#### 2 ft VAPOR LIGHT



L405

15/20/25W

3wattages Selectable  
Lumens: Up to 3250Lms  
4CCT:30/35/40/50K  
Input Voltage:100-277V CRI:>80  
0-10V dimming



L406

15/20/25W

**WITH EMERGENCY BACKUP**

3wattages Selectable  
Lumens: Up to 3250Lms  
4CCT:30/35/40/50K  
Input Voltage:100-277V CRI:>80  
0-10V dimming

#### 4 ft VAPOR LIGHT



L409

40/50/60W

3wattages Selectable  
Lumens: Up to 8400Lms  
3CCT:40/50/60K  
Input Voltage:100-277V CRI:>80  
0-10V dimming



L410

40/50/60W

**WITH EMERGENCY BACKUP**

3wattages Selectable  
Lumens: Up to 8400Lms  
3CCT:40/50/60K  
Input Voltage:100-277V CRI:>80  
0-10V dimming

#### 8 ft VAPOR LIGHT



L408

70/80/90W

3wattages Selectable  
Lumens: Up to 11700Lms  
3CCT:40/50/60K  
Input Voltage:100-277V CRI:>80  
0-10V dimming



L411

70/80/90W

**WITH EMERGENCY BACKUP**

3wattages Selectable  
Lumens: Up to 11700Lms  
3CCT:40/50/60K  
Input Voltage:100-277V CRI:>80  
0-10V dimming

### LED SIGN TUBES



#### APPLICATIONS

- Double-sided or single-sided Light boxes.
- Freezer
- Walk-in Cooler Door.



Ideal for retail businesses, shopping centres, professional businesses and hospitality

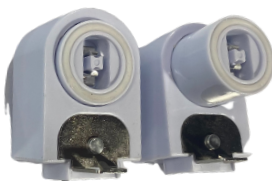
### 360 DOUBLE SIDE SIGN LIGHTS

**Double Sided with R17D Ends  
+ Built-in Driver**

#### Double Sided Sign Tubes

Code	Size	Retrofit	Wattage	Lumens	CCT	Voltage	CRI	Wiring
L167	2FT	F24	15W	2100Lms	6500K	100-277V	>80	1End/2End
L146	2.5FT	F30	18W	2520Lms	6500K	100-277V	>80	1End/2End
L168	3FT	F36	20W	2800Lms	6500K	100-277V	>80	1End/2End
L166	3.5FT	F42	24W	3360Lms	6500K	100-277V	>80	1End/2End
L170	4FT	F48	30W	4200Lms	6500K	100-277V	>80	1End/2End
L171	5FT	F60	35W	4900Lms	6500K	100-277V	>80	1End/2End
L175	5.3FT	F64	40W	5600Lms	6500K	100-277V	>80	1End/2End
L172	6FT	F72	45W	6300Lms	6500K	100-277V	>80	1End/2End
L173	7FT	F84	50W	7000Lms	6500K	100-277V	>80	1End/2End
L174	8FT	F96	60W	8400Lms	6500K	100-277V	>80	1End/2End
L176	9FT	F108	60W	8400Lms	6500K	100-277V	>80	1End/2End
L177	9.75FT	F117	70W	9800Lms	6500K	100-277V	>80	1End/2End
L178	10FT	F120	70W	9800Lms	6500K	100-277V	>80	1End/2End

#### ACCESSORIES



LAMP HOLDER  
1085



LAMP HOLDER  
WITH SPRING  
1086

### LED SIGN TUBES



#### APPLICATIONS

- Single-sided or single-sided Light boxes.
- Freezer
- Walk-in Cooler Door.

Ideal for retail businesses, shopping centres, professional businesses and hospitality



### 360 SINGLE SIDE SIGN LIGHTS

#### Single Sided with R17D Ends + Built-in Driver

##### Single Sided Sign Tubes

Code	Size	Retrofit	Wattage	Lumens	CCT	Voltage	CRI	Wiring
L180	2FT	F24	15W	2100Lms	6500K	100-277V	>80	1End/2End
L147	2.5FT	F30	18W	2520Lms	6500K	100-277V	>80	1End/2End
L181	3FT	F36	20W	2800Lms	6500K	100-277V	>80	1End/2End
L182	3.5FT	F42	24W	3360Lms	6500K	100-277V	>80	1End/2End
L183	4FT	F48	30W	4200Lms	6500K	100-277V	>80	1End/2End
L184	5FT	F60	35W	4900Lms	6500K	100-277V	>80	1End/2End
L185	5.3FT	F64	40W	5600Lms	6500K	100-277V	>80	1End/2End
L186	6FT	F72	45W	6300Lms	6500K	100-277V	>80	1End/2End
L187	7FT	F84	50W	7000Lms	6500K	100-277V	>80	1End/2End
L188	8FT	F96	60W	8400Lms	6500K	100-277V	>80	1End/2End
L189	9FT	F108	60W	8400Lms	6500K	100-277V	>80	1End/2End
L179	9.75FT	F117	70W	9800Lms	6500K	100-277V	>80	1End/2End
L169	10FT	F120	70W	9800Lms	6500K	100-277V	>80	1End/2End

### ACCESSORIES



LAMP HOLDER



LAMP HOLDER WITH SPRING

### LED SIGN LIGHT BAR



**APPLICATIONS**  
Signs, Light Box

#### DOUBLE SIDED LIGHT BAR

Code	Size	Retrofit	Wattage	Lumens	CCT	Voltage	CRI
L205	2FT	F24	12	1320	6500K	24V	>80
L206	2.5FT	F30	14.4	1584	6500K	24V	>80
L207	3FT	F36	19	2090	6500K	24V	>80
L208	3.5FT	F42	20.4	2244	6500K	24V	>80
L209	4FT	F48	24	2640	6500K	24V	>80
L210	5FT	F60	30	3300	6500K	24V	>80
L211	6FT	F72	36	3960	6500K	24V	>80
L212	7FT	F84	42	4620	6500K	24V	>80
L213	8FT	F96	48	5280	6500K	24V	>80
L214	9FT	F108	54	5940	6500K	24V	>80
L215	10FT	F120	60	6600	6500K	24V	>80

#### DOUBLE SIDED LIGHT BAR

Code	Size	Retrofit	Wattage	Lumens	CCT	Voltage	CRI
L190	2FT	F24	6	660	6500K	24V	>80
L191	2.5FT	F30	7.2	792	6500K	24V	>80
L192	3FT	F36	9	990	6500K	24V	>80
L193	3.5FT	F42	10.2	1122	6500K	24V	>80
L194	4FT	F48	12	1320	6500K	24V	>80
L195	5FT	F60	15	1650	6500K	24V	>80
L196	6FT	F72	18	1980	6500K	24V	>80
L197	7FT	F84	21	2310	6500K	24V	>80
L198	8FT	F96	24	2640	6500K	24V	>80
L199	9FT	F108	27	2970	6500K	24V	>80
L200	10FT	F120	30	3300	6500K	24V	>80

### LED MODULES



#### APPLICATIONS

- LED modules are the perfect solution for upgrading existing LIGHT BOXES.
- Many applications such as Markets, Retail Offices, Liquor Stores, high end retail stores, and printing facilities need high performance modules color appearance.
- Our LED modules display the true color of products.



**L252**

**0.48W**  
White 10000K

Lumens: 80Lms  
Input Voltage: 12V DC  
IP65  
Beam Angle: 170



**L251**

**0.48W**  
RED

Input Voltage: 12V DC  
IP65  
Beam Angle: 170



**L240**

**0.72W**  
RGB

Input Voltage: 12V DC  
IP65  
Beam Angle: 160



**L250**

**0.72W**  
Pixel LED Module

Input Voltage: 12V DC  
IP65  
Beam Angle: 160



**L242**

**0.72W**  
White 10000K

Lumens: 160Lms  
Input Voltage: 12V DC  
IP65  
Beam Angle: 170  
Nonpolarity  
Constant current  
Constant Voltage



**L248**

**0.72W**  
RED

Input Voltage: 12V DC  
IP65  
Beam Angle: 170  
Nonpolarity  
Constant current  
Constant Voltage



**L244**

**0.72W**  
BLUE

Input Voltage: 12V DC  
IP65  
Beam Angle: 170  
Nonpolarity  
Constant current  
Constant Voltage

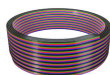


**L246**

**0.72W**  
GREEN

Input Voltage: 12V DC  
IP65  
Beam Angle: 170  
Nonpolarity  
Constant current  
Constant Voltage

#### ACCESSORIES



**1600**  
RGBW WIRE



**1601**  
AWG 18/2  
DC WIRE



**1602**  
AWG 20  
RGB WIRE

# LED DRIVERS/CONTROLLERS



## LED DRIVERS



LPV-60W-12V  
LPV-60W-24V  
LPV-100W-12V  
LPV-100W-24V



XLG-75W-12V-A  
XLG-150W-12V-A  
XLG-150W-24V-A  
XLG-200W-12V-A  
XLG-200W-24V-A  
XLG-300W-12V-A  
XLG-300W-24V-A



UHP-500-12V  
UHP-500-24V



## DIMMER & CONTROLLERS



FUT021  
RF Wireless  
LED Dimmer



FUT044  
RGBW LED  
Strip Controller



FUT089  
8 ZONE  
RGBW Remote



M05  
Waterproof  
Mini RGB  
LED Controller

### LED ROPE/FLEX TUBES



#### APPLICATIONS

- Double-sided or single-sided Light boxes.
- Freezer
- Walk-in Cooler Door.
- Indoor and Outdoor Decorations
- Architectural Lighting



### LED ROPE LIGHTS



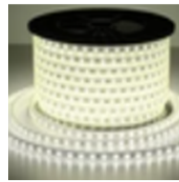
L236

Length: 165FT ; CCT: 3000K  
LED Quantity: 60 LED/M  
Working Temperature: -20 to 40  
Lumens: 300/ ft.  
Wattage: 2.4W/ ft.  
Type: Easy Connect  
Size: 9/16" x 3/16"  
Cut Point: Every 19"  
Working Input Voltage: 120V  
IP Rating: IP65



L237

Length: 165FT ; CCT: 4000K  
LED Quantity: 60 LED/M  
Working Temperature: -20 to 40  
Lumens: 300/ ft.  
Wattage: 2.4W/ ft.  
Type: Easy Connect  
Size: 9/16" x 3/16"  
Cut Point: Every 19"  
Working Input Voltage: 120V  
IP Rating: IP65



L238

Length: 165FT ; CCT: 5000K  
LED Quantity: 60 LED/M  
Working Temperature: -20 to 40  
Lumens: 300/ ft.  
Wattage: 2.4W/ ft.  
Type: Easy Connect  
Size: 9/16" x 3/16"  
Cut Point: Every 19"  
Working Input Voltage: 120V  
IP Rating: IP65



L239

Length: 165FT ; CCT: RGB  
LED Quantity: 60 LED/M  
Working Temperature: -20 to 40  
Lumens: 300/ ft.  
Wattage: 2.4W/ ft.  
Type: Easy Connect  
Size: 9/16" x 3/16"  
Cut Point: Every 19"  
Working Input Voltage: 120V  
IP Rating: IP65

### LED FLEX LIGHTS



L233

Length: 100FT ; CCT: RED  
LED Quantity: 40 LED/M  
Working Temperature: -20 to 40  
Lumens: 78/ ft.  
Wattage: 1.4W/ ft.  
Type: Easy Connect  
Size: 9/16" x 3/16"  
Cut Point: Every 5"  
Working Input Voltage: 120V



L231

Length: 100FT ; CCT: BLUE  
LED Quantity: 40 LED/M  
Working Temperature: -20 to 40  
Lumens: 78/ ft.  
Wattage: 1.4W/ ft.  
Type: Easy Connect  
Size: 9/16" x 3/16"  
Cut Point: Every 5"  
Working Input Voltage: 120V



L232

Length: 100FT ; CCT: GREEN  
LED Quantity: 40 LED/M  
Working Temperature: -20 to 40  
Lumens: 78/ ft.  
Wattage: 1.4W/ ft.  
Type: Easy Connect  
Size: 9/16" x 3/16"  
Cut Point: Every 5"  
Working Input Voltage: 120V



L234

Length: 100FT ; CCT: WHITE  
LED Quantity: 40 LED/M  
Working Temperature: -20 to 40  
Lumens: 78/ ft.  
Wattage: 1.4W/ ft.  
Type: Easy Connect  
Size: 9/16" x 3/16"  
Cut Point: Every 5"  
Working Input Voltage: 120V



L230

Length: 100FT ; CCT: ORANGE  
LED Quantity: 40 LED/M  
Working Temperature: -20 to 40  
Lumens: 78/ ft.  
Wattage: 1.4W/ ft.  
Type: Easy Connect  
Size: 9/16" x 3/16"  
Cut Point: Every 5"  
Working Input Voltage: 120V



L226

Length: 100FT ; CCT: YELLOW  
LED Quantity: 40 LED/M  
Working Temperature: -20 to 40  
Lumens: 78/ ft.  
Wattage: 1.4W/ ft.  
Type: Easy Connect  
Size: 9/16" x 3/16"  
Cut Point: Every 5"  
Working Input Voltage: 120V



L230

Length: 100FT ; CCT: AMBER  
LED Quantity: 40 LED/M  
Working Temperature: -20 to 40  
Lumens: 78/ ft.  
Wattage: 1.4W/ ft.  
Type: Easy Connect  
Size: 9/16" x 3/16"  
Cut Point: Every 5"  
Working Input Voltage: 120V



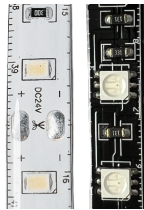
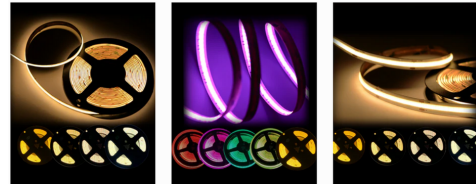
L225

Length: 100FT ; CCT: PINK  
LED Quantity: 40 LED/M  
Working Temperature: -20 to 40  
Lumens: 78/ ft.  
Wattage: 1.4W/ ft.  
Type: Easy Connect  
Size: 9/16" x 3/16"  
Cut Point: Every 5"  
Working Input Voltage: 120V

### LED RIBBON FLEXIBLE STRIP LIGHT

#### APPLICATIONS

- LED modules are the perfect solution for upgrading existing LIGHT BOXES.
- Many applications such as Markets, Retail Offices, Liquor Stores,
- high end retail stores, and printing facilities
- need high performance modules color appearance.
- Our LED modules display the true color of products.



Code	Wattage	Voltage	Color	Type	Length
L01	72W	24V	2700K	Indoor	16.4FT
L02	72W	24V	3000K	Indoor	16.4FT
L03	72W	24V	5000K	Outdoor	16.4FT
L04	72W	24V	RGB	Indoor	16.4FT
L05	72W	12V	RGB	Outdoor	16.4FT



Code	Wattage	Voltage	Color	Type	Length
L50	57W	24V	2700K	Indoor	16.4FT
L51	57W	12V	2700K	Indoor	16.4FT
L44	57W	24V	3000K	Indoor	16.4FT
L45	57W	12V	3000K	Indoor	16.4FT
L42	57W	24V	4000K	Indoor	16.4FT
L43	57W	12V	4000K	Indoor	16.4FT
L40	57W	24V	5000K	Indoor	16.4FT
L41	57W	12V	5000K	Indoor	16.4FT
L52	287W	24V	2700K	Indoor	82FT
L53	287W	24V	3000K	Indoor	82FT
L54	287W	24V	4000K	Indoor	82FT
L55	287W	24V	5000K	Indoor	82FT
L56	287W	12V	2700K	Indoor	82FT
L57	287W	12V	3000K	Indoor	82FT
L58	287W	12V	4000K	Indoor	82FT
L59	287W	12V	5000K	Indoor	82FT



Code	Wattage	Voltage	Color	Type	Length
L60	90W	24V	2700K	Indoor	16.4FT
L61	90W	12V	2700K	Indoor	16.4FT
L46	90W	24V	3000K	Indoor	16.4FT
L62	90W	12V	3000K	Indoor	16.4FT
L47	90W	24V	4000K	Indoor	16.4FT
L63	90W	12V	4000K	Indoor	16.4FT
L48	90W	24V	5000K	Indoor	16.4FT
L64	90W	12V	5000K	Indoor	16.4FT
L49	90W	24V	RGB	Indoor	16.4FT
L65	90W	12V	RGB	Indoor	16.4FT



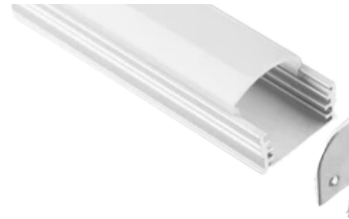
## ALUMINUM CHANNEL



Part #: BN269  
W: 3/4" x H: 1/2"  
Length: 8ft



Part #: BN250  
Anodizing Aluminum  
PC Cover: Frosted Diffuser  
W: 11/16" x H: 3/8"  
Length: 8ft



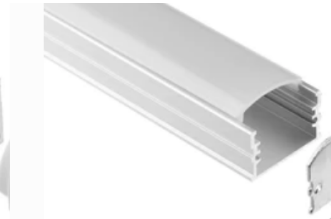
Part #: BN251  
PC Cover: Frosted Diffuser  
W: 13/16" x H: 3/8"  
Length: 8ft



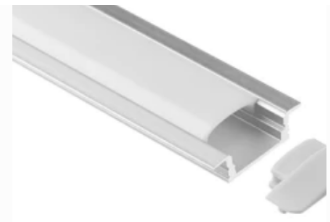
Part #: BN252  
Anodizing Aluminum  
PC Cover: Frosted Diffuser  
W: 5/8" x H: 1/4"  
Length: 8ft



Part #: BN252  
V Shape 90 Degree Corner  
Anodizing Aluminum  
PC Cover: Frosted Diffuser  
W: 5/8" x H: 1/4"  
Length: 8ft



Part #: BN256  
W: 1" x H: 5/8"  
Length: 8ft  
Adjustable  
/Large Housing



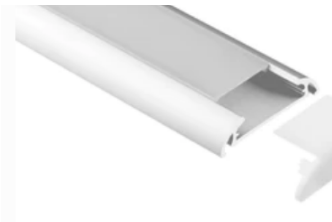
Part #: BN257  
W: 11/16" x H: 1/4"  
Length: 8ft  
Flush Mount  
For use in an  
indent application.



BN258  
W: 1 1/4" x H: 1 1/4"  
Length: 8ft  
Large housing to be  
used in suspension  
application



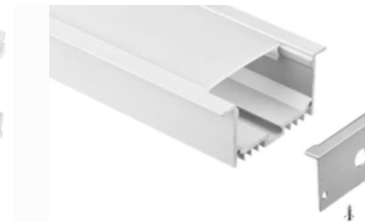
Part #: BN259  
W: 15/16" x H: 3/8"  
Length: 8ft



Part #: BN260  
PC Cover:  
Frosted Diffuser  
W: 1 1/4" x H: 1/4"  
Length: 8ft



Part #: BN261  
PC Cover:  
Frosted Diffuser  
W: 1 11/16" x H: 5/8"  
Length: 8ft



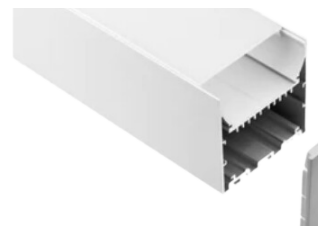
Part #: BN262  
PC Cover:  
Frosted Diffuser  
W: 2 1/8" x H: 1 1/4"  
Length: 8ft



Part #: BN263  
PC Cover:  
Frosted Diffuser  
W: 12/16" x H: 1/8"  
Length: 8ft & 6.5ft



Part #: BN264  
PC Cover:  
Frosted Diffuser  
W: 1" x H: 7/16"  
Length: 8ft



Part #: BN265  
W: 3" x H: 3"  
Length: 8ft  
Large housing to  
be used in suspension  
application

### EXIT SIGNS-EMERGENCY LIGHTS



#### APPLICATIONS

- Emergency Exits
- Restaurants
- Hotels
- Commercial Buildings



Code	Description
EX1500	Exit Sign Red Letter with Battery Backup
EX1501	Exit Sign Green Letter with Battery Backup



Code	Description
EX1502	Exit Sign Combo Red Letter with Battery Backup
EX1503	Exit Sign Combo Green Letter with Battery Backup



**WET LOCATION**

Code	Description
EX1505	Exit Sign Red Letter with Battery Backup
EX1506	Exit Sign Green Letter with Battery Backup



Code	Description
EX1507	Arcylic Exit Sign Red Letter with Battery Backup
EX1508	Arcylic Exit Sign Green Letter with Battery Backup



Code	Description
EX1504	Emergency Light



Code	Description
EX1509	Emergency Light

**CYANTEK LED LIGHTING**



**(562)499-9597**

**(562)392-2999**

**(844)456-2926**

**15323 Garfield Ave Unit B,  
Paramount, CA 90723**

**[www.cyantekledlighting.com](http://www.cyantekledlighting.com)**



**CYANTEK**  
**LED LIGHTING**

