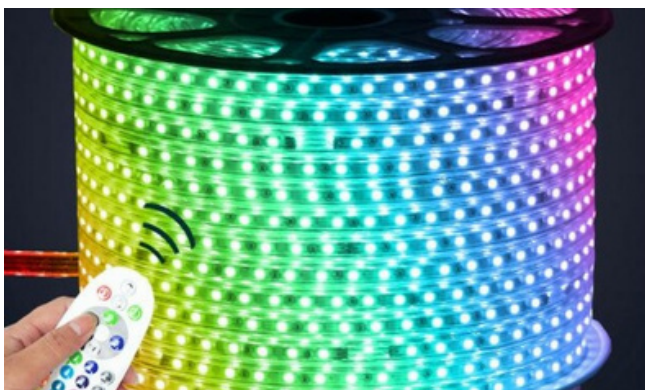


LED LIGHTING SOLUTIONS



CYANTEK
LED LIGHTING



CYANTEK LED LIGHTING

(562)499-9597

562)392-2999

(844)456-2926

15323 GARFIELD AVE UNIT

B, PARAMOUNT CA 90723



www.cyantekledlighting.com

ABOUT CYANTEK



OUR SERVICE

- Residential, Commercial & Industrial Solutions for LED Lighting & Electrical Supply
- Outdoor Lighting, Parking Lights & Gardening
- Direct Import from Manufacturer.
- Warranty and Amazing Customer Service.
- Order Consolidation



CONTACT US

(562)499-9597 / (562)392-2999

15323 Garfield Ave Unit B

Paramount, CA 90723

TABLE OF CONTENTS

OUTDOOR LIGHTING

	Page
Area Lights G10	A-1
Area Lights G09	A-2
Wall Packs	A-3
LED Floodlights Modular	A-4
LED Floodlights Compact	A-5
LED Solar Lightings	A-6
LED Canopy Lights	A-7
LED Post Top Lights	A-8
LED Bollard Lights	A-9
LED Cylinder Lights	A-10
LED Security Lights	A-11
Outdoor Lighting Accessories	A-12

INDOOR LIGHTING

LED T8 Tubes	B-1
LED T5/U-Tube/Emergency Tube	B-2
LED Integrated Tubes	B-3
LED Linear Strip Lights	B-4
LED Architectural Lights	B-5
LED Track Lights	B-6
LED Panels	B-7
LED Troffers	B-8
LED Wrap Arounds Lights	B-9
LED High Bay Lights	B-10
LED Recessed Light	B-11
LED Disk Light	B-12
LED Canless Downlight Lights	B-13
LED Commercial Downlight Lights	B-14
LED Ceiling Lights	B-15
LED Wall Sconces	B-16
LED Vanity Lights	B-17
LED Bulbs	B-18
LED PL LAMPS	B-19
LED CORN Bulbs	B-20
LED Magnetic Strips	B-21

INDOOR MIRROR LIGHTS

LED Color Tunable Mirror Lights	C-1
LED Oval Color Tunable Mirror Lights	C-2
LED RGB Mirror Light	C-3

REFRIGERATION

	Page
LED Cooler Lights	D-1
LED Vapor Lights	D-2

LED SIGNAGE LIGHTS

LED Sign Tubes 360 Double Face	E-1
LED Sign Tubes 180 Single Face	E-2
LED Light Bars	E-3
LED Modules	E-4

LED POWER SUPPLY

LED Drivers/LED Controllers	F-1
-----------------------------	-----

LED ROPE LIGHTS

LED Rope Lights	G-1
LED Flex Tubes	G-1
LED Ribbon Lights	G-2

ALUMINUM CHANNELS

Channels	H-1
----------	-----

EXIT SIGNS

Exit Signs /Emergency Lights	I-1
------------------------------	-----



CYANTEK
LED LIGHTING

Authorized
Distributor for

VoltaLED



APPLICATIONS

- Parking Lot
- Building Exterior



G10 SERIES



V71

80/100/120/150W

4 wattages Selectable
Lumens: Up to 23250Lms
CCT: 5000K
Input Voltage:100-277V CRI:>70
Housing: Bronze



V72

170/200/220/240W

4 wattages Selectable
Lumens: Up to 37200Lms
CCT: 5000K
Input Voltage:100-277V CRI:>70
Housing: Bronze



V73

240/260/280/310W

4 wattages Selectable
Lumens: Up to 48050Lms
CCT: 5000K
Input Voltage:100-277V CRI:>70
Housing: Bronze



V74

80/100/120/150W

4 wattages Selectable
Lumens: Up to 23250Lms
CCT: 5000K
Input Voltage:100-277V CRI:>70
Housing: White



V75

240/260/280/310W

4 wattages Selectable
Lumens: Up to 48050Lms
CCT: 5000K
Input Voltage:100-277V CRI:>70
Housing: White



V76

80/100/120/150W

4 wattages Selectable
Lumens: Up to 23250Lms
CCT: 5000K
Input Voltage:277-480V CRI:>70
Housing: Bronze



V77

240/260/280/310W

4 wattages Selectable
Lumens: Up to 48050Lms
CCT: 5000K
Input Voltage:277-480V CRI:>70
Housing: Bronze

ACCESSORIES



Photocell 120-277v
/120-347v/208-480v

1070



Photocell 277VAC-480VAC

1071



Slip fitter Trunion Arm

1060



1061



1062



Glare Shield

1063



PIR Motion Sensor 12 V

1064

APPLICATIONS

- Parking Lot
- Building Exterior



G09 SERIES



V67

100W

Lumens:15000Lms
CCT: 5000K CRI:>70
Input Voltage:100-277V
Housing: Bronze



V68

150W

Lumens:22500Lms
CCT: 5000K CRI:>70
Input Voltage:100-277V
Housing: Bronze



V69

200W

Lumens:30000Lms
CCT: 5000K CRI:>70
Input Voltage:100-277V
Housing: Bronze



V70

320W

Lumens:48000Lms
CCT: 5000K CRI:>70
Input Voltage:100-277V
Housing: Bronze

MOUNTING BRACKET OPTIONS



1065 1066 1067

Control Options



Photocell 120VAC-277VAC

1070



Photocell 277VAC-480VAC

1071



Photocell 120VAC-277VAC

1069



Motion Sensor

1068



APPLICATIONS

- Parking Lot
- Building Exterior



TRADITIONAL



V113

30/40/50W

3 Wattages Selectable
Lumens: Up to 7000Lms
3CCT: 3000/4000/5000K
Input Voltage:100-277V CRI:>70
Housing: Bronze



V112

72/96/120W

3 wattages Selectable
Lumens: Up to 16800Lms
3CCT: 3000/4000/5000K
Input Voltage:100-277V CRI:>70
Housing: Bronze
Built-in Photocell

ADJUSTABLE



V109

30/40/50W

3 wattages Selectable
Lumens: Up to 7000Lms
3CCT: 3000/4000/5000K
Input Voltage:100-277V CRI:>70
Housing: Bronze
Built-in Photocell



V110

72/96/120W

3 wattages Selectable
Lumens: Up to 16800Lms
3CCT: 3000/4000/5000K
Input Voltage:100-277V CRI:>70
Housing: Bronze
Built-in Photocell

ROTATABLE



V109

40W

Lumens: 5200Lms
CCT: 5000K
Input Voltage:100-277V
CRI:>70
Housing: Bronze

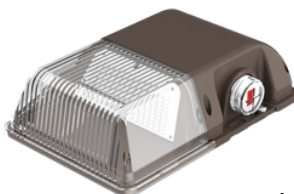


V100

80W

Lumens: 10400Lms
CCT: 5000K
Input Voltage:100-277V CRI:>70
Housing: Bronze

MINI WALLPACK



V72

15/20/25W

3 wattages Selectable
Lumens: Up to 3375Lms
3CCT: 3000/4000/5000K
Input Voltage:100-277V CRI:>70
Housing: Bronze
Built-in Photocell

ACCESSORIES



1059

APPLICATIONS

- Landscaping
- Building Exterior



MODULAR SERIES

LED FLOOD LIGHT MODULAR -KNUCKLE



L19

15W

Lumens: 1947Lms CRI:>70
 3CCT: 3000/4000/5000K
 Input Voltage:100-277V
 Housing: Bronze Bracket: Knuckle



L34

15/20/25W

3wattages Selectable
 Lumens: Up to 3125Lms
 3CCT: 3000/4000/5000K
 Input Voltage:100-277V CRI:>80
 Housing: Bronze



L21

30W

Lumens: 3600 Lms CRI:>70
 CCT: 5000K
 Input Voltage:100-277V
 Housing: Bronze Bracket: Knuckle



L23

50W

Lumens: 6000Lms CRI:>70
 CCT: 5000K
 Input Voltage:100-277V
 Housing: Bronze Bracket: Knuckle

LED FLOOD LIGHT MODULAR -U-BRACKET



L18

15W

Lumens: 1947Lms CRI:>70
 3CCT: 3000/4000/5000K
 Input Voltage:100-277V
 Housing: Bronze Bracket: Trunnion



L20

30W

Lumens: 3600Lms CRI:>70
 CCT: 5000K
 Input Voltage:100-277V
 Housing: Bronze Bracket: U-Bracket



L22

50W

Lumens: 6000Lms CRI:>70
 CCT: 5000K
 Input Voltage:100-277V
 Housing: Bronze Bracket: U-Bracket

LED FLOOD LIGHT MODULAR 100W



L25

100W

Lumens: 13000Lms
 CCT: 5000K
 Input Voltage:100-277V
 CRI:>70
 Housing: Bronze
 Bracket:Yoke



L24

100W

Lumens: 13000Lms
 CCT: 5000K
 Input Voltage:100-277V
 CRI:>70
 Housing: Bronze
 Bracket: Knuckle



L32

100W

Lumens: 13000Lms
 CCT: 5000K
 Input Voltage:100-277V
 CRI:>70
 Housing: Bronze
 Bracket: Slip Fitter



LED FLOOD LIGHT COMPACT - MODULAR V-SERIES



30W

Lumens: 3600Lms CRI:>70
CCT: 5000K
Input Voltage:100-277V
Housing: Bronze
Bracket: Knuckle



50W

Lumens: 3600Lms CRI:>70
CCT: 5000K
Input Voltage:100-277V
Housing: Bronze
Bracket: Knuckle



30W

Lumens: 3600Lms CRI:>70
CCT: 5000K
Input Voltage:100-277V
Housing: Bronze
Bracket: Yoke



50W

Lumens: 3600Lms CRI:>70
CCT: 5000K
Input Voltage:100-277V
Housing: Bronze
Bracket: Yoke

LED FLOOD LIGHT MODULAR 5700K



150W

Lumens: 18750Lms CRI:>70
CCT: 5700K
Input Voltage:100-277V
Housing: Black
Bracket:U Bracket



240W

Lumens: 30000Lms CRI:>70
CCT: 5700K
Input Voltage:100-277V
Housing: Black
Bracket:U Bracket



300W

Lumens: 37500Lms CRI:>70
CCT: 5700K
Input Voltage:100-277V
Housing: Black
Bracket: U Bracket

LED FLOOD LIGHT E-STYLE - U BRACKET



30W

Lumens: 3900Lms
CCT: 5000K
Input Voltage:100-277V CRI:>70
Housing: Black
Bracket:U Bracket



50W

Lumens: 6500Lms
CCT: 5000K
Input Voltage:100-277V CRI:>70
Housing: Black
Bracket:U Bracket



100W

Lumens: 13000Lms
CCT: 5000K
Input Voltage:100-277V CRI:>70
Housing: Black
Bracket:U Bracket



150W

Lumens: 19500Lms
CCT: 5000K
Input Voltage:100-277V CRI:>70
Housing: Black
Bracket:U Bracket

LED FLOOD LIGHT GLASS SERIES



100W

Lumens: 13000Lms
CCT: 5700K
Input Voltage:100-277V CRI:>70
Housing: Black
Bracket: U Bracket



150W

Lumens: 19500Lms
CCT: 5700K
Input Voltage:100-277V CRI:>70
Housing: Black
Bracket: U Bracket



200W

Lumens: 26000Lms
CCT: 5700K
Input Voltage:100-277V CRI:>70
Housing: Black
Bracket: U Bracket



SOLAR LIGHTING

APPLICATIONS

Designed For Remote Areas
12-16Ft Lighting Poles, No
Need Cable, No Electricity.



70W

Lumens: 7000Lms

CCT: 5700K

Input Voltage:100-277V CRI:>70

Housing: Grey

Bracket:Slip Fitter

IP Rating:IP66

Beam Angle: 150*70

Battery:18650 Lithium Battery 12V 50Ah

Operation Time: Full Power>12hours,

Intelligent Mode 3-4days

Control Mode : Photocell + Sensor

Dimension: L37.2"*W11.7"*H5"

Solar LED Street Light Features

All In One Design Function , Low Profile Design,
With Motion Sensor And Smart Controller All
Built In. Designed For Remote Areas 12-16Ft
Lighting Poles, No Need Cable, No Electricity.
Deep Cycle Battery, Charge And Discharge
Over 500 Times. Can Work 3- 4 Continuous
Rainy Days At Intelligent Mode.



CANOPY LIGHTS

GARAGE CANOPY LIGHT



APPLICATIONS

- Parking Structures
- Garage Locations
- Entryways/Overhangs
- Commercial applications



V128

30/40/50W

3 Wattages Selectable
 Lumens: Up to 6750Lms
 3CCT: 3000/4000/5000K
 Input Voltage:100-277V CRI:>70
 Housing: Bronze
 Dimention:L9.5"*W9.5"*H3.5"



V129

72/96/120W

3 wattages Selectable
 Lumens: Up to 15000Lms
 3CCT: 3000/4000/5000K
 Input Voltage:100-277V CRI:>70
 Housing: Bronze
 Dimention:L12"*W12"*H4"

GAS STATION CANOPY LIGHT



APPLICATIONS

Gas Station Lighting



V132

150W

Lumens: 19050Lms
 CCT: 5000K
 Input Voltage:100-277V CRI:>70
 Housing: White
 Dimention:L14.9"*W14.9"*H3.36"



V139

240W

Lumens: 33600Lms
 CCT: 5700K
 Input Voltage:100-277V CRI:>70
 Housing: White
 Dimention:L21"*W21"*H1.5"



APPLICATIONS

- Shopping Malls
- Sporting Complex
- Garden Lighting
- Parking Lot

LED POST TOP LIGHTS



L90

20/40/50/60W

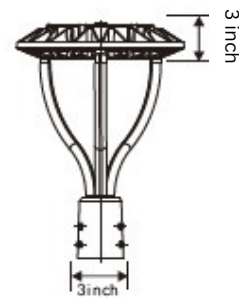
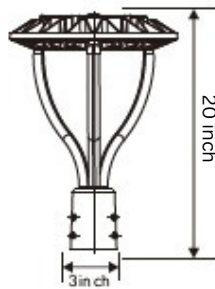
4 wattages Selectable
 Lumens: Up to 7800Lms
 3 CCT: 3000/4000/5000K
 Input Voltage: 100-277V CRI: >70
 Housing: Black



L35

80/100/120/150W

4 wattages Selectable
 Lumens: Up to 19500Lms
 3 CCT: 3000/4000/5000K
 Input Voltage: 100-277V CRI: >70
 Housing: Black



ACCESSORIES

Control Options



Photocell

Photocell 120VAC-277VAC

1070



922

4 " Reducer
(Square Pole)



924

4 " Reducer
(Round Pole)

LED BOLLARD LIGHTS



APPLICATIONS

- Walkways•
- Driveways•
- Lighting Landscape•
- Family-Multi ,Hospitality•
- Corridors Outdoor•
- Industrial



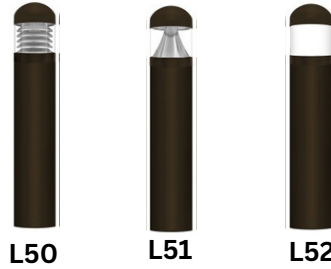
ROUND FLAT



12/16/22W

3 Wattages Selectable
 Lumens: Up to 2860Lms
 5CCT: 27/30/35/40/50K
 Input Voltage:100-277V
 CRI:>80
 Housing: Bronze

DOMES FLAT



12/16/22W

3 Wattages Selectable
 Lumens: Up to 2860Lms
 5CCT: 27/30/35/40/50K
 Input Voltage:100-277V
 CRI:>80
 Housing: Bronze

BL BLACK



12/16/22W

3 Wattages Selectable
 Lumens: Up to 2860Lms
 5CCT: 27/30/35/40/50K
 Input Voltage:100-277V
 CRI:>80
 Housing: Bronze

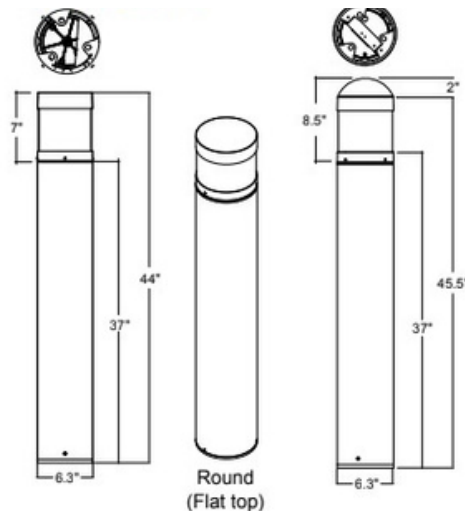
ACCESSORIES



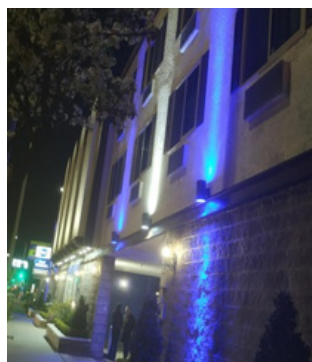
SENSOR

Harvesting Daylight /w
 Sensor Motion Level Bi
 Control Remote- sensor
 external /w Version
 Detachable
 Compatible

DIMENSIONS



LED CYLINDER LIGHTS



APPLICATIONS

Building Exteriors

Hotels



L56

2X20W

Lumens: 4800Lms

CCT: 3000K

Input Voltage:100-277V IP66

Housing: Bronze

Dimension: Dia5.78"*W11.8"



L56

2X20W

Lumens: 4800Lms

CCT: 5000K

Input Voltage:100-277V IP66

Housing: Bronze

Dimension: Dia5.78"*W11.8"



L141

2X20W

Lumens: 4800Lms

CCT: BLUE

Input Voltage:100-277V IP66

Housing: Bronze

Dimension: Dia5.78"*W11.8"



L144

2X20W

CCT: RGBW

Input Voltage:100-277V IP66

Housing: Bronze

Dimension: Dia5.78"*W11.8"



APPLICATIONS

SUITABLE APPLICATIONS

Built in dusk to dawn photocell available

Area Lighting

Lightweight and easy access wiring

SECURITY LIGHTS MOTION SENSOR



L550

20w

Lumens: 2400Lms
CCT: 5000K CRI:>90
Input Voltage:120V
Housing: White
with Photocell &
Motion Sensor



L550

20w

Lumens: 2400Lms
CCT: 5000K CRI:>90
Input Voltage:120V
Housing: Black
with Photocell &
Motion Sensor



L552

35w

Lumens: 4200Lms
CCT: 5000K CRI:>90
Input Voltage:120V
Housing: White
with Photocell &
Motion Sensor



L553

35w

Lumens: 4200Lms
CCT: 5000K CRI:>90
Input Voltage:120V
Housing: Black
with Photocell &
Motion Sensor

OUTDOOR LIGHTING ACCESSORIES

WALL TENONS



4" WALL TENON
920



90 WALL TENON
921



4" ADAPTER
922



5" ADAPTER
923

REDUCER



4" REDUCER
924



5" REDUCER
925



SINGLE SPOKE
931



DOUBLE SPOKE 180
926

SPOKE



DOUBLE SPOKE 90
927



TRIPLE SPOKE 120
928



TRIPLE SPOKE 90
929



QUAD SPOKE
930

BULL HORN



BULL HORN
TWIN
909



BULL HORN
TWINS IN LINE
913



BULL HORN
TRIPLE IN LINE
911



BULL HORN
QUAD
910

SQUARE POLE



4" SQUARE
15 FT. POLE



4" SQUARE
20 FT. POLE



4" SQUARE
25 FT. POLE

LED T8 TUBES



2 FT-3FT-4FT-5FT-6FT- 8FT

Code	Size	Wattage	Lumens	CCT	Voltage	CRI	Wiring	Type	Lens
300	2FT	9W	1170Lms	5000K	100-277V	>80	TypeAB	By-pin	Frosted
301	2FT	9W	1170Lms	4000K	100-277V	>80	TypeAB	By-pin	Frosted
302	3FT	12W	1560Lms	5000K	100-277V	>80	TypeAB	By-pin	Frosted
303	4FT	18W	2340Lms	5000K	100-277V	>80	TypeAB	By-pin	Frosted
304	4FT	18W	2340Lms	5000K	100-277V	>80	TypeAB	By-pin	Clear
305	4FT	18W	2340Lms	4000K	100-277V	>80	TypeAB	By-pin	Frosted
307	4FT	18W	2340Lms	3000K	100-277V	>80	TypeAB	By-pin	Frosted
308	4FT	15W	1950Lms	5000K	100-277V	>80	TypeAB	By-pin	Frosted
309	4FT	15W	1950Lms	4000K	100-277V	>80	TypeAB	By-pin	Frosted
310	4FT	12W	1560Lms	5000K	100-277V	>80	TypeAB	By-pin	Frosted
311	4FT	12W	1560Lms	4000K	100-277V	>80	TypeAB	By-pin	Frosted
336	4FT	22W	3080Lms	6500K	100-277V	>80	TypeB	By-pin	Frosted
337	4FT	22W	3080Lms	6500K	100-277V	>80	TypeB	By-pin	Clear
338	4FT	22W	3080Lms	30/40/50/65K	100-277V	>80	TypeB	By-pin	Frosted
339	4FT	22W	3080Lms	30/40/50/65K	100-277V	>80	TypeB	By-pin	Clear
312	5FT	27W	3510Lms	5000K	100-277V	>80	TypeB	By-pin	Frosted
313	6FT	28W	3640Lms	5000K	100-277V	>80	TypeB	R 17D	Frosted
330	8FT	40W	5600Lms	5000K	100-277V	>80	TypeB	FA8	Clear
331	8FT	40W	5600Lms	5000K	100-277V	>80	TypeB	FA8	Frosted
332	8FT	40W	5600Lms	6500K	100-277V	>80	TypeB	FA8	Clear
333	8FT	40W	5600Lms	6500K	100-277V	>80	TypeB	FA8	Frosted
334	8FT	40W	5600Lms	5000K	100-277V	>80	TypeB	R 17D	Clear
335	8FT	40W	5600Lms	5000K	100-277V	>80	TypeB	R 17D	Frosted
340	8FT	40W	5600Lms	30/40/50/65K	100-277V	>80	TypeB	FA8	Clear
341	8FT	40W	5600Lms	30/40/50/65K	100-277V	>80	TypeB	FA8	Frosted
342	8FT	40W	5600Lms	30/40/50/65K	100-277V	>80	TypeB	R 17D	Clear
343	8FT	40W	5600Lms	30/40/50/65K	100-277V	>80	TypeB	R 17D	Frosted

TOMBSTONE- LAMP HOLDER



G13 - T8 LAMP HOLDER

1080



FA8 - SINGLE PIN LAMP HOLDER

1081



SINGLE PIN LAMP HOLDER

1082



R17D LAMP HOLDER

1083

Code	Descriptions
S4-232	4FT LED Strip Fixture (LED Ready) for 2*4FT Tubes
S8-259	8FT LED Strip Fixture (LED Ready) for 2*8FT Tubes
S8-432	8FT LED Strip Fixture (LED Ready) for 4*4FT Tubes

8 FT. FIXTURE ACCS



1084

T8 Conversion Kit. One 8ft bulb to two 4ft bulbs.



LED T5 TUBES U-SHAPE TUBES EMERGENCY TUBES



T-5 TUBES

Code	Size	Wattage	Lumens	CCT	Voltage	CRI	Wiring	Lens
326	4FT	24W	3120Lms	4000K	100-277V	>80	TypeB	Frosted
328	4FT	24W	3120Lms	5000K	100-277V	>80	TypeB	Frosted



U-Shape Tubes (U6)

Code	Size	Wattage	Lumens	CCT	Voltage	CRI	Wiring	Lens
350	2FT/U6	15W	1950Lms	4000K	100-277V	>80	TypeAB	Frosted
351	2FT/U6	15W	1950Lms	5000K	100-277V	>80	TypeAB	Frosted



U-Shape Tubes (U1)

Code	Size	Wattage	Lumens	CCT	Voltage	CRI	Wiring	Lens
352	2FT/U1	15W	1950Lms	4000K	100-277V	>80	TypeAB	Frosted
353	2FT/U1	15W	1950Lms	5000K	100-277V	>80	TypeAB	Frosted



LED Emergency Tube

Code	Size	Wattage	Lumens	CCT	Voltage	CRI	Wiring	Lens
327	4FT	24W	1950Lms	30/40/50K	100-277V	>80	TypeB	Frosted



LED INTEGRATED TUBES



2 FT - 3 FT- 4FT - 5FT - 6FT- 8FT

Code	Size	Wattage	Lumens	CCT	Voltage	CRI	Lens
260	2FT	10W	1400Lms	5000K	100-277V	>80	Clear
261	2FT	10W	1400Lms	6500K	100-277V	>80	Frosted
262	3FT	20W	2800Lms	5000K	100-277V	>80	Clear
281	3FT	20W	2800Lms	5000K	100-277V	>80	Frosted
263	3FT	20W	2800Lms	6500K	100-277V	>80	Clear
264	4FT	30W	4200Lms	5000K	100-277V	>80	Clear
265	4FT	30W	4200Lms	6500K	100-277V	>80	Clear
266	4FT	30W	4200Lms	5000K	100-277V	>80	Frosted
267	4FT	30W	4200Lms	6500K	100-277V	>80	Frosted
268	5FT	40W	5600Lms	5000K	100-277V	>80	Clear
269	5FT	40W	5600Lms	6500K	100-277V	>80	Clear
270	6FT	48W	6720Lms	5000K	100-277V	>80	Clear
271	6FT	48W	6720Lms	6500K	100-277V	>80	Clear
272	8FT	60W	8400Lms	5000K	100-277V	>80	Clear
273	8FT	60W	8400Lms	6500K	100-277V	>80	Clear
274	8FT	60W	8400Lms	5000K	100-277V	>80	Frosted
275	8FT	60W	8400Lms	6500K	100-277V	>80	Frosted
276	8FT	72W	10080Lms	6500K	100-277V	>80	Clear
286	2FT	10W	1400Lms	30/40/50/65K	100-277V	>80	Clear
287	2FT	10W	1400Lms	30/40/50/65K	100-277V	>80	Frosted
288	3FT	20W	2800Lms	30/40/50/65K	100-277V	>80	Clear
289	3FT	20W	2800Lms	30/40/50/65K	100-277V	>80	Frosted
277	4FT	30W	4200Lms	30/40/50/65K	100-277V	>80	Clear
278	4FT	30W	4200Lms	30/40/50/65K	100-277V	>80	Frosted
279	5FT	40W	5600Lms	30/40/50/65K	100-277V	>80	Clear
280	5FT	40W	5600Lms	30/40/50/65K	100-277V	>80	Frosted
282	6FT	48W	6720Lms	30/40/50/65K	100-277V	>80	Clear
283	6FT	48W	6720Lms	30/40/50/65K	100-277V	>80	Frosted
284	8FT	60W	8400Lms	30/40/50/65K	100-277V	>80	Clear
285	8FT	60W	8400Lms	30/40/50/65K	100-277V	>80	Frosted

ACCESSORIES



1090

Power Cord
with On/off Switch

LINEAR STRIP LIGHTS



Application:
Bathroom
Office
Factory
Bus/subway/train station



V385
20/30/40W

4 ft
 3 Wattages Selectable, Lumens: Up to 5200Lms
 3CCT: 30/40/50K, CRI:>80
 Input Voltage:100-277V, Housing: White



V387
20/30/40W

4 ft
 3 Wattages Selectable, Lumens: Up to 5200Lms
 3CCT: 30/40/50K, CRI:>80
 Input Voltage:100-277V, Housing: White
 Emergency Battery Backup



V386
70/80/90W

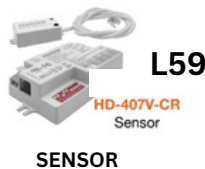
8 ft.
 3 Wattages Selectable, Lumens: Up to 11700Lms
 3CCT: 30/40/50K, CRI:>80
 Input Voltage:100-277V, Housing: White



V388
70/80/90W

8 ft.
 3 Wattages Selectable, Lumens: Up to 11700Lms
 3CCT: 30/40/50K, CRI:>80
 Input Voltage:100-277V, Housing: White
 Emergency Battery Backup

ACCESSORIES



Harvesting Daylight /w
 Sensor Motion Level Bi
 Control Remote- sensor
 external /w Version
 Detachable
 Compatible



LED ARCHITECTURAL LIGHTS



Ideal for, retail locations, offices, lobbies, conference rooms, reception areas, hallways, educational facilities, hotels, and restaurants



L433

25/30/36W

4 FT

3wattages Selectable

Lumens: Up to 4680Lms

3CCT: 35/40/50K

Input Voltage:100-277V CRI:>80

Housing: White

Lighting Distribution:

Up30% & Down70%



L434

30/50/72W

8 FT

3wattages Selectable

Lumens: Up to 4680Lms

3CCT: 35/40/50K

Input Voltage:100-277V CRI:>80

Housing: White

Lighting Distribution:

Up30% & Down70%



L433

25/30/36W

4 FT

3wattages Selectable

Lumens: Up to 4680Lms

3CCT: 35/40/50K

Input Voltage:100-277V CRI:>80

Housing: Black

Lighting Distribution:

Up30% & Down70%



L434

30/50/72W

8 FT

3wattages Selectable

Lumens: Up to 4680Lms

3CCT: 35/40/50K

Input Voltage:100-277V CRI:>80

Housing: Black

Lighting Distribution:

Up30% & Down70%

ACCESSORIES



Joint Type: X

439



Joint Type: L

440



Joint Type: T

441

LED TRACK LIGHTS



APPLICATIONS

- Residential
- Retail Space
- Office
- Hospitality
- Lobbies
- Art Galleries
- Museums



TRACK HEADS



816

30W

Lumens: Up to 3000Lms
 5CCT: 27/3035/40/50K
 Input Voltage:120V CRI:>90
 Housing: White
 Beam angle: 24/36/60



817

30W

Lumens: Up to 3000Lms
 5CCT: 27/3035/40/50K
 Input Voltage:120V CRI:>90
 Housing: Black
 Beam angle: 24/36/60



812

11W

Work with Par30 LED Bulb 11W
 Lumens: Up to 700Lms
 CCT: 5000K
 Input Voltage:120V CRI:>90
 Housing: White



813

11W

Work with Par30 LED Bulb 11W
 Lumens: Up to 700Lms
 CCT: 5000K
 Input Voltage:120V CRI:>90
 Housing: Black

8 FT TRACK



810

8FT Track White



811

8FT Track Black

ACCESSORIES



814



815



818



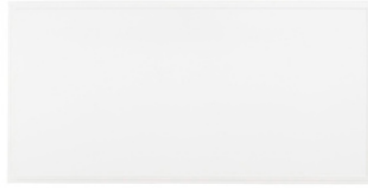
819

LED PANEL LIGHT



APPLICATIONS

- Lobbies
- Art Galleries
- Museums



LED PANEL FOR RECESSED



V358

2x2ft

30/35/40/45/50W

5 Wattages Selectable
Lumens: Up to 6500Lms
5CCT:30/40/50/57/65K
Input Voltage:100-277V
CRI:>80 0-10V dimming

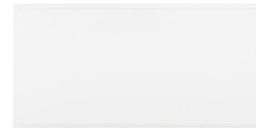


V459

1x4ft

30/35/40/45/50W

5 Wattages Selectable
Lumens: Up to 6500Lms
5CCT:30/40/50/57/65K
Input Voltage:100-277V
CRI:>80 0-10V dimming



V432

2x4ft

40/50/55/60/72W

5 wattages Selectable
Lumens: Up to 9360Lms
5CCT:30/40/50/57/65K
Input Voltage:100-277V
CRI:>80 0-10V dimming

LED SURFACE MOUNT PANEL



V358

2x2ft

40 W

Lumens:4000Lms
3CCT:30/40/50K
Input Voltage:100-277V
CRI:>80 0-10V dimming



V459

1x4ft

40 W

Lumens:4000Lms
3CCT:30/40/50K
Input Voltage:100-277V
CRI:>80 0-10V dimming



V432

2x4ft

50 W

Lumens: 5000Lms
5CCT:30/40/50K
Input Voltage:100-277V
CRI:>80 0-10V dimming

LED SURFACE MOUNTING FRAME



Code	Size
446	2*2
448	1*4
447	2*4

FLANGE KIT SURFACE MOUNT



Code	Size
449	2*2
451	1*4
450	2*4

ACCESSORIES



Emergency LED Driver
20 Watt, Up to 90 Min. of Operation in case of Emergency.

1101

LED TROFFERS



APPLICATIONS

- Factory
- Office Building
- Shopping Center
- Residential Lighting



LED TROFFER



L460
2x2ft
30/35/40W

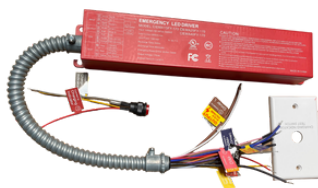
3 Wattages Selectable
Lumens: Up to 5000Lms
3CCT:35/40/50K
Input Voltage:100-277V
CRI:>80 0-10V dimming



L463
2x4ft
34/38/45W

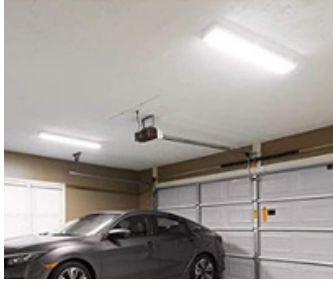
3 Wattages Selectable
Lumens: Up to 5620Lms
3CCT:35/40/50K
Input Voltage:100-277V
CRI:>80 0-10V dimming

ACCESSORIES



1101

LED WRAP AROUND



APPLICATIONS

- Factory
- Office Building
- Shopping Center
- Residential Lighting



LED WRAPAROUND



L396

4FT*5"Wide

32/40/48W

3 wattages Selectable
Lumens: Up to 5616Lms
5CCT:30/40/50K
Input Voltage:100-277V
CRI:>80 0-10V dimming



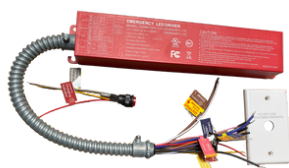
L397

4FT*9"Wide

60W

Lumens:7200Lms
CCT:5000K
Input Voltage:100-277V
CRI:>80 0-10V dimming

ACCESSORIES



1100

Emergency LED Driver

LED HIGH BAY



APPLICATIONS

- Residential
- Retail Space
- Office
- Hospitality
- Lobbies
- Art Galleries
- Museums



UFO HIGH BAY



L616

100/120/150W

3 Wattages Selectable
Lumens: Up to 23250Lms
2CCT:4000/5000K
Input Voltage:100-277V
CRI:>80 0-10V dimming



L615

180/200/240W

3 Wattages Selectable
Lumens: Up to 37200Lms
2CCT:4000/5000K
Input Voltage:100-277V
CRI:>80 0-10V dimming

COMPACT HIGH BAY



L624

80/100/130W

3 Wattages Selectable
Lumens: Up to 19500Lms
CCT:5000K
Input Voltage:100-277V
CRI:>80 0-10V dimming



L623

130/180/210W

3 wattages Selectable
Lumens: Up to 31500Lms
CCT:5000K
Input Voltage:100-277V
CRI:>80 0-10V dimming

COMPACT HIGH BAY



L517

225W

Lumens: 29250Lms
CCT:5000K
Input Voltage:100-277V
CRI:>80 0-10V dimming



L625

300W

Lumens: 36000Lms
CCT:5000K
Input Voltage:100-277V
CRI:>80 0-10V dimming

DEFORMABLE HIGH BAY



1023

150W

Lumens: 19500Lms
CCT:5000K
Input Voltage:100-277V
CRI:>80

ACCESSORIES



1104

Emergency LED Driver
20 Watt, Up to 90 Min.
of Operation in case
of Emergency.



40W
Emergency Backup
for UFO High bay

LED RECESSED LIGHTS



ROUND



L480
4"

Wattage: 9W
Lumens:720Lms
5CCT:27/30/35/40/50K
Input Voltage:120V
CRI:>90 Dimmable



L483
5/6"

Wattage: 12W
Lumens:1000Lms
5CCT:27/30/35/40/50K
Input Voltage:120V CRI:>90
Dimmable



L493
5/6"

Wattage: 12/15/18W
Lumens:Up to 1650Lms
5CCT:27/30/35/40/50K
Input Voltage:120V CRI:>90
Dimmable



L494
5/6"

Wattage: 15W
CCT:RGBW
Input Voltage:120V CRI:>90
Dimmable



L496
4"

Wattage: 10W
Lumens:750Lms
5CCT:27/30/35/40/50K
Input Voltage:120V
CRI:>90 Dimmable
Housing: White



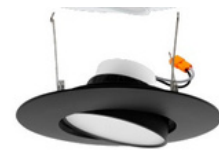
L495
4"

Wattage: 12W
Lumens:1000Lms
5CCT:27/30/35/40/50K
Input Voltage:120V
CRI:>90
Dimmable
Housing: Black



L497
5/6"

Wattage: 16.5W
Lumens:1200Lms
5CCT:27/30/35/40/50K
Input Voltage:120V
CRI:>90 Dimmable
Housing: White



L498
5/6"

Wattage: 16.5W
Lumens:1200Lms
5CCT:27/30/35/40/50K
Input Voltage:120V
CRI:>90 Dimmable
Housing: Black

SQUARE



L478
4"

Wattage: 11W
Lumens:750Lms
5CCT:27/30/35/40/50K
Input Voltage:120V CRI:>90
Dimmable



L479
6"

Wattage: 14W
Lumens:110Lms
5CCT:27/30/35/40/50K
Input Voltage:120V CRI:>90
Dimmable

NEW CONSTRUCTION



4 " New Construction
L496



6 " New Construction
L495

REMODEL

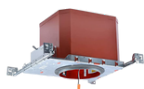


4 " Remodel
1032



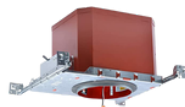
6 " Remodel
1033

NEW CONSTRUCTION (FIRE RATED)



4" FIRE RATED
New Construction

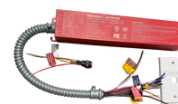
1034



6" FIRE RATED
New Construction

1035

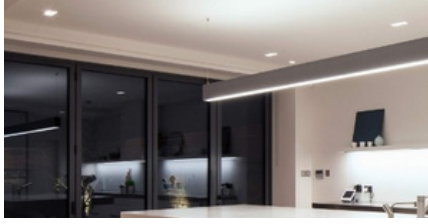
ACCESSORIES



1103

25W Emergency Backup

LED DISK LIGHTS



APPLICATIONS

- Residential
- Lighting Commercial
- Lighting Recessed
- Lighting Indoor General



LED DISK LIGHTS



L620
4"

Wattage: 10W
Lumens:650Lms
5CCT:27/30/35/40/50K
Input Voltage:120V CRI:>90
Dimmable



L621
6"

Wattage: 15W
Lumens:1000Lms
5CCT:27/30/35/40/50K
Input Voltage:120V CRI:>90
Dimmable



L622
8"

Wattage: 18W
Lumens:1400Lms
5CCT:27/30/35/40/50K
Input Voltage:120V CRI:>90
Dimmable

LED DISK LIGHTS



L623
4"

Wattage: 10W
Lumens:650Lms
5CCT:27/30/35/40/50K
Input Voltage:120V
CRI:>90 Dimmable
with Motion Sensor



L624
6"

Wattage: 15W
Lumens:1000Lms
5CCT:27/30/35/40/50K
Input Voltage:120V
CRI:>90 Dimmable
With Motion Sensor

ACCESSORIES



1103

LED CANLESS DOWNLIGHTS

APPLICATIONS

- Residential
- Retail Space
- Office
- Hospitality
- Lobbies
- Art Galleries
- Museums



LED CANLESS - SMOOTH



L509

4"
12W

Lumens: 1000Lms
5CCT:27/30/35/40/50K
Input Voltage:120V CRI:>90
dimming



L510

6"
15W

Lumens: 1100Lms
5CCT:27/30/35/40/50K
Input Voltage:120V CRI:>90
dimming



L511

8"
22W

Lumens: 1600Lms
5CCT:27/30/35/40/50K
Input Voltage:120V CRI:>90
dimming

LED CANLESS - BAFFLE



L512

4"
10W

Lumens:650Lms
5CCT:27/30/35/40/50K
Input Voltage:120V
CRI:>90 Dimmable



L513

6"
12W

Lumens:900Lms
5CCT:27/30/35/40/50K
Input Voltage:120V
CRI:>90 Dimmable



L514

4"
10W

Lumens:650Lms
5CCT:27/30/35/40/50K
Input Voltage:120V
CRI:>90 Dimmable



L515

6"
15W

Lumens:1100Lms
5CCT:27/30/35/40/50K
Input Voltage:120V
CRI:>90 Dimmable

LED CANLESS - GIMBLE



L481

3"
6W

Lumens:370Lms
5CCT:27/30/35/40/50K
Input Voltage:120V
CRI:>90 Dimmable



L482

4"
9W

Lumens:540Lms
5CCT:27/30/35/40/50K
Input Voltage:120V
CRI:>90 Dimmable



L485

4"
8W

Lumens:500Lms
5CCT:27/30/35/40/50K
Input Voltage:120V
CRI:>90 Dimmable



L486

6"
12W

Lumens:800Lms
5CCT:27/30/35/40/50K
Input Voltage:120V
CRI:>90 Dimmable



L486

3"
6W

Lumens:345Lms
5CCT:27/30/35/40/50K
Input Voltage:120V CRI:>90
Dimmable



L487

4"
9W

Lumens:540Lms
5CCT:27/30/35/40/50K
Input Voltage:120V CRI:>90
Dimmable



L488

6"
12W

Lumens:800Lms
5CCT:27/30/35/40/50K
Input Voltage:120V CRI:>90
Dimmable

ACCESSORIES



1103

25W Emergency Backup



1040

3/4" Mount Plate with
Hanger Bar for Canless Downlight



1041

Mount Plate
for Canless Downlight



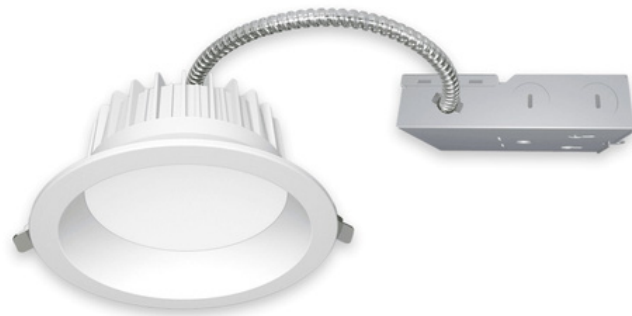
1050 6" Groof Ring

1051 8" Groof Ring

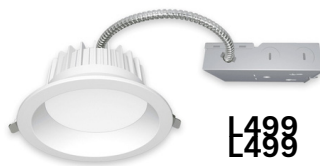
LED COMMERCIAL DOWNLIGHTS

APPLICATIONS

- Residential
- Retail Space
- Office
- Hospitality
- Lobbies
- Art Galleries
- Museums



COMMERCIAL CANLESS



6"
25W

Lumens: 2000Lms
3CCT:30/40/50K
Input Voltage:100-277V CRI:>90
dimming



8"
25W

Lumens: 2000Lms
3CCT:30/40/50K
Input Voltage:100-277V CRI:>90
dimming

COMMERCIAL SPLIT



L490

4"
20W

Lumens: 1800Lms
3CCT:30/40/50K
Input Voltage:100-277V CRI:>90
0-10V dimming



L491

6"
20W

Lumens: 1800Lms
3CCT:30/40/50K
Input Voltage:100-277V CRI:>90
0-10V dimming



L492

8"
20W

Lumens: 1800Lms
3CCT:30/40/50K
Input Voltage:100-277V CRI:>90
0-10V dimming

COMMERCIAL CANLESS



L504

4"
12W

Lumens: 960Lms
3CCT:30/40/50K
Input Voltage:100-277V
CRI:>90 0-10V dimming



L505

6"
33W

Lumens: 2640Lms
3CCT:30/40/50K
Input Voltage:100-277V
CRI:>90 0-10V dimming



L506

8"
22W

Lumens: 1760Lms
3CCT:30/40/50K
Input Voltage:100-277V
CRI:>90 0-10V dimming



L507

10"
33W

Lumens: 1800Lms
3CCT:30/40/50K
Input Voltage:100-277V
CRI:>90 0-10V dimming

LED CEILING LIGHTS



APPLICATIONS

- Lobbies
- Art Galleries
- Residential



ROUND - SURFACE MOUNT



L517

7"

15W

Lumens: 1000Lms
5CCT:27/30/35/40/50K
Input Voltage:120V
CRI:>90 dimming



L518

12"

22W

Lumens: 1450Lms
5CCT:27/30/35/40/50K
Input Voltage:120V
CRI:>90 dimming



L516

15"

30W

Lumens: 2000Lms
5CCT:27/30/35/40/50K
Input Voltage:120V
CRI:>90 dimming

ROUND - SURFACE MOUNT



L522

7"

15W

Lumens: 1000Lms
5CCT:27/30/35/40/50K
Input Voltage:120V
CRI:>90 dimming



V520

9"

18W

Lumens: 1440Lms
5CCT:27/30/35/40/50K
Input Voltage:120V
CRI:>90 dimming



V519

12"

22W

Lumens: 1600Lms
5CCT:27/30/35/40/50K
Input Voltage:120V
CRI:>90 dimming

ROUND - DOUBLE RING



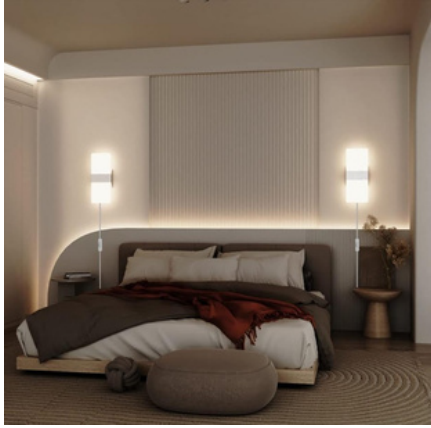
L521

14"

25W

Lumens: 1600Lms
5CCT:27/30/40/50/60K
Input Voltage:120V
CRI:>90 dimming

LED WALL SCONCES



APPLICATIONS

- Lobbies
- Art Galleries
- Residential



RECTANGULAR



L950

12W

Lumens: 1080Lms
5CCT:27/30/40/50/60K
Input Voltage:120V
CRI:>90
Dimmable
Silver



L951

12W

Lumens: 1080Lms
5CCT:27/30/40/50/60K
Input Voltage:120V
CRI:>90
Dimmable
Brass

HALF MOON



L953

15W

with A19 LED Bulb
Lumens: 1100Lms
CCT:2700K
Input Voltage:120V
CRI:>90
Dimmable



L954

15W

with A19 LED Bulb
Lumens: 1100Lms
CCT:3000K
Input Voltage:120V
CRI:>90
Dimmable



L955

15W

with A19 LED Bulb
Lumens: 1100Lms
CCT:2700K
Input Voltage:120V
CRI:>90
Dimmable



L956

15W

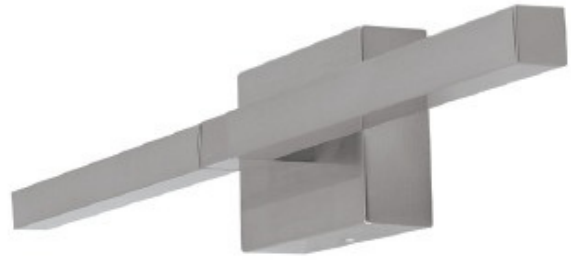
with A19 LED Bulb
Lumens: 1100Lms
CCT:3000K
Input Voltage:120V
CRI:>90
Dimmable

LED VANITY LIGHTS



APPLICATIONS

- Hotels
- Office
- Home
- Restaurant



ROTATABLE



L960

20W

Lumens: 1400Lms
5CCT:27/30/35/40/50K
Input Voltage:120V CRI:>90
Dimmable
Rotatable
Color: Silver



L961

20W

Lumens: 1400Lms
5CCT:27/30/35/40/50K
Input Voltage:120V CRI:>90
Dimmable
Rotatable
Color: Brass

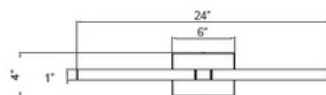


L961

20W

Lumens: 1400Lms
5CCT:27/30/35/40/50K
Input Voltage:120V CRI:>90
Dimmable
Rotatable
Color: Black

DIMENSIONS



24"(W) x 4"(H)

LED BULBS



A19

Code	Wattage	CCT	Lumens
L1201	9W	2700K	800lms
L1202	9W	3000K	800lms
L1203	9W	4000K	800lms
L1204	9W	5000K	800lms

A19

Code	Wattage	CCT	Lumens
L1205	15W	2700K	1600lms
L1206	15W	3000K	1600lms
L1207	15W	4000K	1600lms
L1208	15W	5000K	1600lms

A19 GU24 Base

Code	Wattage	CCT	Lumens
L1229	9W	2700K	800lms
L1230	9W	3000K	800lms
L1231	9W	4000K	800lms
L1232	9W	5000K	800lms

A21

Code	Wattage	CCT	Lumens
L1209	22W	2700K	2550lms
L1210	22W	3000K	2550lms
L1211	22W	4000K	2550lms
L1212	22W	5000K	2550lms

BR30

Code	Wattage	CCT	Lumens
L1213	11W	2700K	850lms
L1214	11W	3000K	850lms
L1215	11W	4000K	850lms
L1216	11W	5000K	850lms

BR40

Code	Wattage	CCT	Lumens
L1217	17W	2700K	1400lms
L1218	17W	3000K	1400lms
L1219	17W	4000K	1400lms
L1220	17W	5000K	1400lms

PAR30

Code	Wattage	CCT	Lumens
L1221	11W	2700K	850lms
L1222	11W	3000K	850lms
L1223	11W	4000K	850lms
L1224	11W	5000K	850lms

PAR38

Code	Wattage	CCT	Lumens
L1225	20W	2700K	1400lms
L1226	20W	3000K	1400lms
L1227	20W	4000K	1400lms
L1228	20W	5000K	1400lms

MR16

Code	Wattage	CCT	Lumens
L1233	7W	2700K	500lms
L1234	7W	3000K	500lms
L1235	7W	4000K	500lms
L1236	7W	5000K	500lms

GU10

Code	Wattage	CCT	Lumens
L1237	7W	2700K	450lms
L1238	7W	3000K	450lms
L1239	7W	4000K	450lms
L1240	7W	5000K	450lms

B10

Code	Wattage	CCT	Lumens
L1241	5.5W	2200K	500lms
L1242	5.5W	2700K	500lms
L1243	5.5W	3000K	500lms
L1244	5.5W	5000K	500lms

BA10

Code	Wattage	CCT	Lumens
L1245	5.5W	2200K	500lms
L1246	5.5W	2700K	500lms



1060



1061

LED PL LAMPS



APPLICATIONS

- Residential
- Retail Space
- Office
- Hospitality
- Lobbies
- Art Galleries
- Museums



GX24 Vertical



Code	Wattage	CCT	Lumens
L1280	12W	3000K	960lms
L1281	12W	4000K	960lms
L1282	12W	5000K	960lms

GX24 Horizontal



Code	Wattage	CCT	Lumens
L1283	12W	3000K	960lms
L1284	12W	4000K	960lms
L1285	12W	5000K	960lms

GX23



Code	Wattage	CCT	Lumens
L1286	7W	3000K	960lms
L1287	7W	4000K	960lms
L1288	7W	5000K	960lms



LED CORN BULBS

APPLICATIONS

Ideal for retrofitting
Canopy, wall
pack, floodlight



V160

18W

Lumens: 2790Lms
CCT:5000K CRI:>80
Input Voltage:100-277
1-10V dimming
Base: E26
Dimension:
Diameter 2.36
Length 6.4"



V161

27W

Lumens: 4185 Lms
CCT:5000K CRI:>80
Input Voltage:100-277
1-10V dimming
Base: E26
Dimension:
Diameter 2.36
Length 8.8"



V162

40W

Lumens: 6200 Lms
CCT:5000K CRI:>80
Input Voltage:100-277
1-10V dimming
Base: E26
Dimension:
Diameter 3.46"
Length 8.26"



V163

42/60W

Lumens: Up to 9300Lms
CCT:4000/5000K CRI:>80
Input Voltage:100-277V
1-10V dimming
Base: E39
Dimension:
Diameter:3.46*
Length:9.68"



V164

72/100W

Lumens: Up to 9300Lms
CCT:4000/5000K CRI:>80
Input Voltage:100-277V
1-10V dimming
Base: E39
Dimension:
Diameter:3.46*
Length:9.68"



V165

80/120W

Lumens: Up to 9300Lms
CCT:4000/5000K CRI:>80
Input Voltage:100-277V
1-10V dimming
Base: E39
Dimension:
Diameter:3.46*
Length:9.68"



L148

54W

Lumens: 7020Lms
CCT:5000K CRI:>80
Input Voltage:100-277V
Base: E39
Dimension:
9.56"x4.48"x3.15"



L149

75W

Lumens: 9750Lms
CCT:5000K CRI:>80
Input Voltage:100-277V
Base: E39
Dimension:
11.69"x5.43"x3.15"



L157

115W

Lumens: 9750Lms
CCT:5000K CRI:>80
Input Voltage:100-277V
Base: E39
Dimension:
11.69"x5.43"x3.15"

ACCESSORIES



L157

E39 -E39 EXTENSION



L157

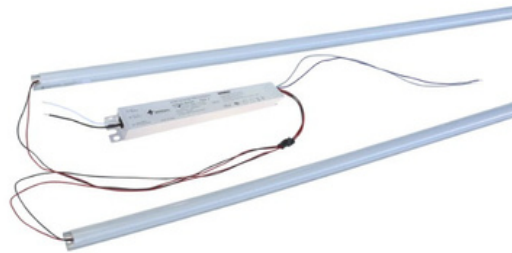
E39 -E26 ADAPTER



L157

E26 -E39 ADAPTER

LED MAGNET STRIPS



APPLICATIONS

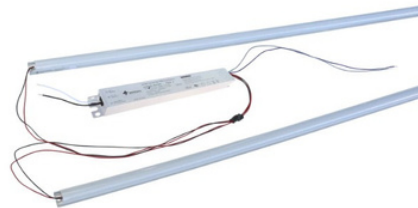
- Residential
- Retail Space
- Office
- Hospitality
- Lobbies
- Art Galleries



2 FEET RETROFIT 25W

25W

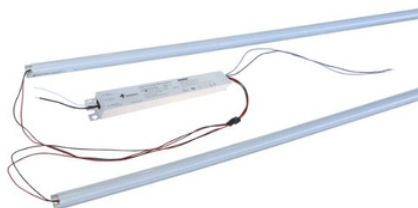
2 Strips with 1 Driver
Lumens: 3500Lms
CCT:5000K
0-10V Dimming
Magnet on Strips and driver



4 FEET RETROFIT 36W

36W

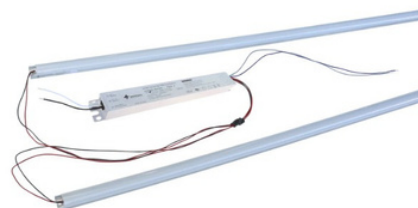
2 Strips with 1 Driver
Lumens: 5040Lms
CCT:5000K
0-10V Dimming
Magnet on Strips and driver



4 FEET RETROFIT 50W

50W

2 Strips with 1 Driver
Lumens: 7000Lms
CCT:5000K
0-10V Dimming
Magnet on Strips and driver



MIRROR LIGHT 3CCT



M1400

20*28"
3CCT:30/40/50K
Defog
Dimmable
Touch Sensor
M1400



M1401

24*32"
3CCT:30/40/50K
Defog
Dimmable
Touch Sensor
M1401



M1402

24*36"
3CCT:30/40/50K
Defog
Dimmable
Touch Sensor
M1402



M1403

28*36"
3CCT:30/40/50K
Defog
Dimmable
Touch Sensor
M1403



M1404

24*40"
3CCT:30/40/50K
Defog
Dimmable
Touch Sensor



M1405

36*36"
3CCT:30/40/50K
Defog
Dimmable
Touch Sensor



M1406

32*40"
3CCT:30/40/50K
Defog
Dimmable
Touch Sensor



M1407

32*48"
3CCT:30/40/50K
Defog
Dimmable
Touch Sensor



M1408

36*48"
3CCT:30/40/50K
Defog
Dimmable
Touch Sensor



M1409

30*55"
3CCT:30/40/50K
Defog
Dimmable
Touch Sensor



1410

28*60"
3CCT:30/40/50K
Defog
Dimmable
Touch Sensor



1411

36*60"
3CCT:30/40/50K
Defog
Dimmable
Touch Sensor

MIRROR LIGHT 3CCT



M1412

32*72"

3CCT:30/40/50K
Defog
Dimmable
Touch Sensor



M1413

32*84"

3CCT:30/40/50K
Defog
Dimmable
Touch Sensor



M1414

36*96"

3CCT:30/40/50K
Defog
Dimmable
Touch Sensor



M1415

36*48"

2CCT:5000/6000K
Defog
Dimmable
Direct Wiring



M1416

24*24"

3CCT:30/40/50K
Defog
Dimmable
Touch Sensor



M1417

32*32"

3CCT:30/40/50K
Defog
Dimmable
Touch Sensor



M1418

24*32"

3CCT:30/40/50K
Defog
Dimmable
Touch Sensor

MIRROR LIGHT RGBW



M1419

20*28"
CCT:RGB+White
Defog
Dimmable
Touch Sensor



M1420

24*32"
CCT:RGB+White
Defog
Dimmable
Touch Sensor



M1421

24*36"
CCT:RGB+White
Defog
Dimmable
Touch Sensor



M1422

28*36"
CCT:RGB+White
Defog
Dimmable
Touch Sensor



M1423

24*40"
CCT:RGB+White
Defog
Dimmable
Touch Sensor



M1424

36*36"
CCT:RGB+White
Defog
Dimmable
Touch Sensor



M1425

32*40"
CCT:RGB+White
Defog
Dimmable
Touch Sensor



M1426

32*48"
CCT:RGB+White
Defog
Dimmable
Touch Sensor



M1427

36*48"
CCT:RGB+White
Defog
Dimmable
Touch Sensor



M1428

30*55"
CCT:RGB+White
Defog
Dimmable
Touch Sensor



M1429

28*60"
CCT:RGB+White
Defog
Dimmable
Touch Sensor



M1430

36*60"
CCT:RGB+White
Defog
Dimmable
Touch Sensor



M1431

32*72"
CCT:RGB+White
Defog
Dimmable
Touch Sensor



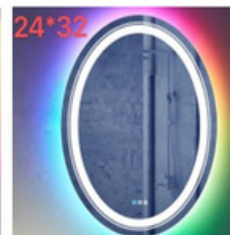
M1432

36*72"
CCT:RGB+White
Defog
Dimmable
Touch Sensor



M1433

32*84"
CCT:RGB+White
Defog
Dimmable
Touch Sensor



24*32

M1434

24*32"
CCT:RGB+White
Defog
Dimmable
Touch Sensor

LED COOLER LIGHTS



APPLICATIONS

IP65 Rated High Lumen LED Light for use in Commercial Refrigerators and Freezers



COOLER LIGHT



V354

4FT 18W

CCT:5000K
Lumens: 3060Lms
Input Voltage:100-277V
CRI:>80 IP65
V-Shape: Beam
Angle:270
Daisy-chain Installation



V354

4FT 18W

CCT:6500K
Lumens: 3060Lms
Input Voltage:100-277V
CRI:>80 IP65
V-Shape: Beam
Angle:270
Daisy-chain Installation

COOLER LIGHT



V356

5FT 22W

CCT:5000K
Lumens: 3740Lms
Input Voltage:100-277V
CRI:>80 IP65
V-Shape:Beam Angle:270
Daisy-chain Installation



V357

5FT 22W

CCT:6500K
Lumens: 3740Lms
Input Voltage:100-277V
CRI:>80 IP65
V-Shape:Beam Angle:270
Daisy-chain Installation

COOLER LIGHT



V358

6FT 30W

CCT:5000K
Lumens: 5100Lms
Input Voltage:100-277V
CRI:>80 IP65
V-Shape:Beam Angle:270
Daisy-chain Installation

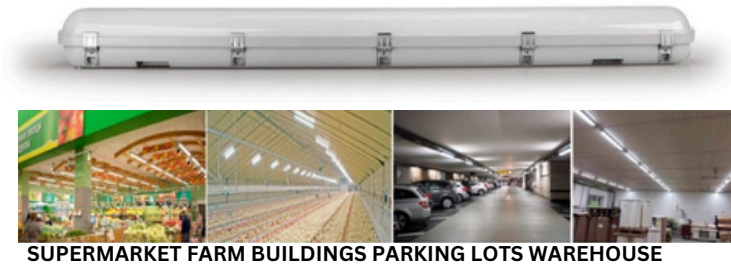


V359

6FT 30W

CCT:6500K
Lumens: 5100Lms
Input Voltage:100-277V
CRI:>80 IP65
V-Shape: Beam Angle:270
Daisy-chain Installation

LED VAPOR LIGHTS



SUPERMARKET FARM BUILDINGS PARKING LOTS WAREHOUSE

APPLICATIONS

- Wet Areas
- Outdoor Walkways
- Warehouse
- Storage Areas
- Farm Buildings



2 FT VAPOR LIGHT



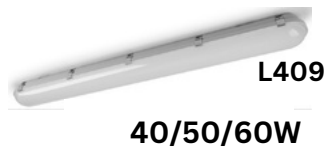
3 wattages Selectable
Lumens: Up to 3250Lms
4 CCT: 30/35/40/50K
Input Voltage: 100-277V CRI: >80
0-10V dimming



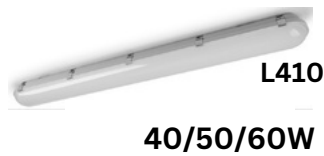
WITH EMERGENCY BACKUP

3 wattages Selectable
Lumens: Up to 3250Lms
4 CCT: 30/35/40/50K
Input Voltage: 100-277V CRI: >80
0-10V dimming

4 FT VAPOR LIGHT



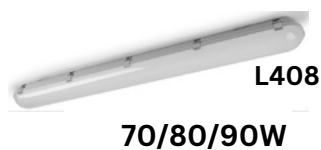
3 wattages Selectable
Lumens: Up to 8400Lms
3 CCT: 40/50/60K
Input Voltage: 100-277V CRI: >80
0-10V dimming



WITH EMERGENCY BACKUP

3 wattages Selectable
Lumens: Up to 8400Lms
3 CCT: 40/50/60K
Input Voltage: 100-277V CRI: >80
0-10V dimming

8 FT VAPOR LIGHT



3 wattages Selectable
Lumens: Up to 11700Lms
3 CCT: 40/50/60K
Input Voltage: 100-277V CRI: >80
0-10V dimming



WITH EMERGENCY BACKUP

3 wattages Selectable
Lumens: Up to 11700Lms
3 CCT: 40/50/60K
Input Voltage: 100-277V CRI: >80
0-10V dimming

LED SIGN TUBES



APPLICATIONS

- Double-sided or single-sided Light boxes.
- Freezer
- Walk-in Cooler Door.



Ideal for retail businesses, shopping centres, professional businesses and hospitality

360° DOUBLE SIDE SIGN LIGHTS

**Double Sided with R17D Ends
+ Built-in Driver**

Double Sided Sign Tubes

Code	Size	Retrofit	Wattage	Lumens	CCT	Voltage	CRI	Wiring
L167	2FT	F24	15W	2100Lms	6500K	100-277V	>80	1End/2End
L146	2.5FT	F30	18W	2520Lms	6500K	100-277V	>80	1End/2End
L168	3FT	F36	20W	2800Lms	6500K	100-277V	>80	1End/2End
L166	3.5FT	F42	24W	3360Lms	6500K	100-277V	>80	1End/2End
L170	4FT	F48	30W	4200Lms	6500K	100-277V	>80	1End/2End
L171	5FT	F60	35W	4900Lms	6500K	100-277V	>80	1End/2End
L175	5.3FT	F64	40W	5600Lms	6500K	100-277V	>80	1End/2End
L172	6FT	F72	45W	6300Lms	6500K	100-277V	>80	1End/2End
L173	7FT	F84	50W	7000Lms	6500K	100-277V	>80	1End/2End
L174	8FT	F96	60W	8400Lms	6500K	100-277V	>80	1End/2End
L176	9FT	F108	60W	8400Lms	6500K	100-277V	>80	1End/2End
L177	9.75FT	F117	70W	9800Lms	6500K	100-277V	>80	1End/2End
L178	10FT	F120	70W	9800Lms	6500K	100-277V	>80	1End/2End

ACCESSORIES



LAMP HOLDER
1085



LAMP HOLDER
WITH SPRING
1086

LED SIGN TUBES



APPLICATIONS

- Single-sided or double-sided Light boxes.
- Freezer
- Walk-in Cooler Door.

Ideal for retail businesses, shopping centres, professional businesses and hospitality



360 SINGLE SIDE SIGN LIGHTS

Single Sided with R17D Ends + Built-in Driver

Single Sided Sign Tubes

Code	Size	Retrofit	Wattage	Lumens	CCT	Voltage	CRI	Wiring
L180	2FT	F24	15W	2100Lms	6500K	100-277V	>80	1End/2End
L147	2.5FT	F30	18W	2520Lms	6500K	100-277V	>80	1End/2End
L181	3FT	F36	20W	2800Lms	6500K	100-277V	>80	1End/2End
L182	3.5FT	F42	24W	3360Lms	6500K	100-277V	>80	1End/2End
L183	4FT	F48	30W	4200Lms	6500K	100-277V	>80	1End/2End
L184	5FT	F60	35W	4900Lms	6500K	100-277V	>80	1End/2End
L185	5.3FT	F64	40W	5600Lms	6500K	100-277V	>80	1End/2End
L186	6FT	F72	45W	6300Lms	6500K	100-277V	>80	1End/2End
L187	7FT	F84	50W	7000Lms	6500K	100-277V	>80	1End/2End
L188	8FT	F96	60W	8400Lms	6500K	100-277V	>80	1End/2End
L189	9FT	F108	60W	8400Lms	6500K	100-277V	>80	1End/2End
L179	9.75FT	F117	70W	9800Lms	6500K	100-277V	>80	1End/2End
L169	10FT	F120	70W	9800Lms	6500K	100-277V	>80	1End/2End

ACCESSORIES



LAMP HOLDER



LAMP HOLDER WITH SPRING

LED SIGN LIGHT BAR



APPLICATIONS
Signs, Light Box

DOUBLE SIDED LIGHT BAR

Code	Size	Retrofit	Wattage	Lumens	CCT	Voltage	CRI
L205	2FT	F24	12	1320	6500K	24V	>80
L206	2.5FT	F30	14.4	1584	6500K	24V	>80
L207	3FT	F36	19	2090	6500K	24V	>80
L208	3.5FT	F42	20.4	2244	6500K	24V	>80
L209	4FT	F48	24	2640	6500K	24V	>80
L210	5FT	F60	30	3300	6500K	24V	>80
L211	6FT	F72	36	3960	6500K	24V	>80
L212	7FT	F84	42	4620	6500K	24V	>80
L213	8FT	F96	48	5280	6500K	24V	>80
L214	9FT	F108	54	5940	6500K	24V	>80
L215	10FT	F120	60	6600	6500K	24V	>80

DOUBLE SIDED LIGHT BAR

Code	Size	Retrofit	Wattage	Lumens	CCT	Voltage	CRI
L190	2FT	F24	6	660	6500K	24V	>80
L191	2.5FT	F30	7.2	792	6500K	24V	>80
L192	3FT	F36	9	990	6500K	24V	>80
L193	3.5FT	F42	10.2	1122	6500K	24V	>80
L194	4FT	F48	12	1320	6500K	24V	>80
L195	5FT	F60	15	1650	6500K	24V	>80
L196	6FT	F72	18	1980	6500K	24V	>80
L197	7FT	F84	21	2310	6500K	24V	>80
L198	8FT	F96	24	2640	6500K	24V	>80
L199	9FT	F108	27	2970	6500K	24V	>80
L200	10FT	F120	30	3300	6500K	24V	>80

LED MODULES



APPLICATIONS

- LED modules are the perfect solution for
- upgrading existing LIGHT BOXES.
- Many applications such as Markets, Retail Offices, Liquor Stores,
- high end retail stores, and printing facilities
- need high performance modules color appearance.
- Our LED modules display the true color of products.



L252

0.48W
White 10000K

Lumens: 80Lms
Input Voltage: 12V DC
IP65
Beam Angle: 170



L251

0.48W
RED

Input Voltage: 12V DC
IP65
Beam Angle: 170



L240

0.72W
RGB

Input Voltage: 12V DC
IP65
Beam Angle: 160



L250

0.72W
Pixel LED Module

Input Voltage: 12V DC
IP65
Beam Angle: 160



L242

0.72W
White 10000K

Lumens: 160Lms
Input Voltage: 12V DC
IP65
Beam Angle: 170
Nonpolarity
Constant current
Constant Voltage



L248

0.72W
RED

Input Voltage: 12V DC
IP65
Beam Angle: 170
Nonpolarity
Constant current
Constant Voltage



L244

0.72W
BLUE

Input Voltage: 12V DC
IP65
Beam Angle: 170
Nonpolarity
Constant current
Constant Voltage

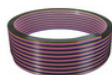


L246

0.72W
GREEN

Input Voltage: 12V DC
IP65
Beam Angle: 170
Nonpolarity
Constant current
Constant Voltage

ACCESSORIES



1600
RGBW WIRE



1601
AWG 18/2
DC WIRE



1602
AWG 20
RGB WIRE

LED DRIVERS/CONTROLLERS



LED DRIVERS



LPV-60W-12V
LPV-60W-24V
LPV-100W-12V
LPV-100W-24V



XLG-75W-12V-A
XLG-150W-12V-A
XLG-150W-24V-A
XLG-200W-12V-A
XLG-200W-24V-A
XLG-300W-12V-A
XLG-300W-24V-A



UHP-500-12V
UHP-500-24V



DIMMER & CONTROLLERS



FUT021
RF Wireless
LED Dimmer



FUT044
RGBW LED
Strip Controller



FUT089
8 ZONE
RGBW Remote



M05
Waterproof
Mini RGB
LED Controller

LED ROPE/FLEX TUBES



APPLICATIONS

- Double-sided or single-sided Light boxes.
- Freezer
- Walk-in Cooler Door.
- Indoor and Outdoor Decorations
- Architectural Lighting



LED ROPE LIGHTS



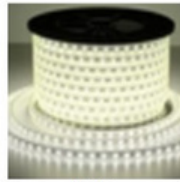
L236

Length: 165FT; CCT: 3000K
LED Quantity: 60 LED/M
Working Temperature: -20 to 40
Lumens: 300/ ft.
Wattage: 2.4W/ ft.
Type: Easy Connect
Size: 9/16" x 3/16"
Cut Point: Every 19"
Working Input Voltage: 120V
IP Rating: IP65



L237

Length: 165FT; CCT: 4000K
LED Quantity: 60 LED/M
Working Temperature: -20 to 40
Lumens: 300/ ft.
Wattage: 2.4W/ ft.
Type: Easy Connect
Size: 9/16" x 3/16"
Cut Point: Every 19"
Working Input Voltage: 120V
IP Rating: IP65



L238

Length: 165FT; CCT: 5000K
LED Quantity: 60 LED/M
Working Temperature: -20 to 40
Lumens: 300/ ft.
Wattage: 2.4W/ ft.
Type: Easy Connect
Size: 9/16" x 3/16"
Cut Point: Every 19"
Working Input Voltage: 120V
IP Rating: IP65



L239

Length: 165FT; CCT: RGB
LED Quantity: 60 LED/M
Working Temperature: -20 to 40
Lumens: 300/ ft.
Wattage: 2.4W/ ft.
Type: Easy Connect
Size: 9/16" x 3/16"
Cut Point: Every 19"
Working Input Voltage: 120V
IP Rating: IP65

LED FLEX LIGHTS



L233

Length: 100FT; CCT: RED
LED Quantity: 40 LED/M
Working Temperature: -20 to 40
Lumens: 78/ ft.
Wattage: 1.4W/ ft.
Type: Easy Connect
Size: 9/16" x 3/16"
Cut Point: Every 5"
Working Input Voltage: 120V



L231

Length: 100FT; CCT: BLUE
LED Quantity: 40 LED/M
Working Temperature: -20 to 40
Lumens: 78/ ft.
Wattage: 1.4W/ ft.
Type: Easy Connect
Size: 9/16" x 3/16"
Cut Point: Every 5"
Working Input Voltage: 120V



L232

Length: 100FT; CCT: GREEN
LED Quantity: 40 LED/M
Working Temperature: -20 to 40
Lumens: 78/ ft.
Wattage: 1.4W/ ft.
Type: Easy Connect
Size: 9/16" x 3/16"
Cut Point: Every 5"
Working Input Voltage: 120V



L234

Length: 100FT; CCT: WHITE
LED Quantity: 40 LED/M
Working Temperature: -20 to 40
Lumens: 78/ ft.
Wattage: 1.4W/ ft.
Type: Easy Connect
Size: 9/16" x 3/16"
Cut Point: Every 5"
Working Input Voltage: 120V



L230

Length: 100FT; CCT: ORANGE
LED Quantity: 40 LED/M
Working Temperature: -20 to 40
Lumens: 78/ ft.
Wattage: 1.4W/ ft.
Type: Easy Connect
Size: 9/16" x 3/16"
Cut Point: Every 5"
Working Input Voltage: 120V



L226

Length: 100FT; CCT: YELLOW
LED Quantity: 40 LED/M
Working Temperature: -20 to 40
Lumens: 78/ ft.
Wattage: 1.4W/ ft.
Type: Easy Connect
Size: 9/16" x 3/16"
Cut Point: Every 5"
Working Input Voltage: 120V



L230

Length: 100FT; CCT: AMBER
LED Quantity: 40 LED/M
Working Temperature: -20 to 40
Lumens: 78/ ft.
Wattage: 1.4W/ ft.
Type: Easy Connect
Size: 9/16" x 3/16"
Cut Point: Every 5"
Working Input Voltage: 120V



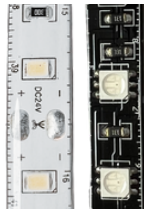
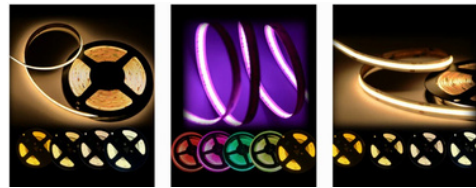
L225

Length: 100FT; CCT: PINK
LED Quantity: 40 LED/M
Working Temperature: -20 to 40
Lumens: 78/ ft.
Wattage: 1.4W/ ft.
Type: Easy Connect
Size: 9/16" x 3/16"
Cut Point: Every 5"
Working Input Voltage: 120V

LED RIBBON FLEXIBLE STRIP LIGHT

APPLICATIONS

- LED modules are the perfect solution for upgrading existing LIGHT BOXES.
- Many applications such as Markets, Retail Offices, Liquor Stores, high end retail stores, and printing facilities need high performance modules color appearance.
- Our LED modules display the true color of products.



Code	Wattage	Voltage	Color	Type	Length
L01	72W	24V	2700K	Indoor	16.4FT
L02	72W	24V	3000K	Indoor	16.4FT
L03	72W	24V	5000K	Outdoor	16.4FT
L04	72W	24V	RGB	Indoor	16.4FT
L05	72W	12V	RGB	Outdoor	16.4FT

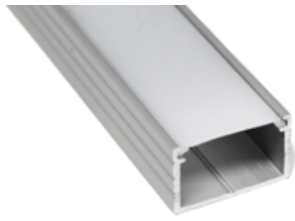


Code	Wattage	Voltage	Color	Type	Length
L50	57W	24V	2700K	Indoor	16.4FT
L51	57W	12V	2700K	Indoor	16.4FT
L44	57W	24V	3000K	Indoor	16.4FT
L45	57W	12V	3000K	Indoor	16.4FT
L42	57W	24V	4000K	Indoor	16.4FT
L43	57W	12V	4000K	Indoor	16.4FT
L40	57W	24V	5000K	Indoor	16.4FT
L41	57W	12V	5000K	Indoor	16.4FT
L52	287W	24V	2700K	Indoor	82FT
L53	287W	24V	3000K	Indoor	82FT
L54	287W	24V	4000K	Indoor	82FT
L55	287W	24V	5000K	Indoor	82FT
L56	287W	12V	2700K	Indoor	82FT
L57	287W	12V	3000K	Indoor	82FT
L58	287W	12V	4000K	Indoor	82FT
L59	287W	12V	5000K	Indoor	82FT

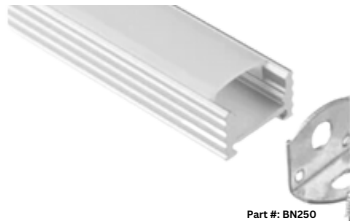


Code	Wattage	Voltage	Color	Type	Length
L60	90W	24V	2700K	Indoor	16.4FT
L61	90W	12V	2700K	Indoor	16.4FT
L46	90W	24V	3000K	Indoor	16.4FT
L62	90W	12V	3000K	Indoor	16.4FT
L47	90W	24V	4000K	Indoor	16.4FT
L63	90W	12V	4000K	Indoor	16.4FT
L48	90W	24V	5000K	Indoor	16.4FT
L64	90W	12V	5000K	Indoor	16.4FT
L49	90W	24V	RGB	Indoor	16.4FT
L65	90W	12V	RGB	Indoor	16.4FT

ALUMINUM CHANNEL



Part #: BN269
W: 3/4" x H: 1/2"
Length: 8ft



Part #: BN250
Anodizing Aluminum
PC Cover: Frosted Diffuser
W: 11/16" x H: 3/8"
Length: 8ft



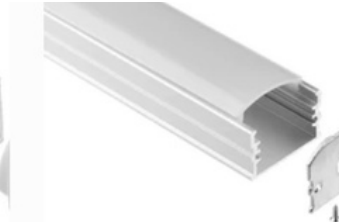
Part #: BN251
PC Cover: Frosted Diffuser
W: 13/16" x H: 3/8"
Length: 8ft



Part #: BN252
Anodizing Aluminum
PC Cover: Frosted Diffuser
W: 5/8" x H: 1/4"
Length: 8ft



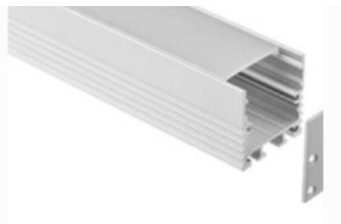
Part #: BN252
V Shape 90 Degree Corner
Anodizing Aluminum
PC Cover: Frosted Diffuser
W: 5/8" x H: 1/4"
Length: 8ft



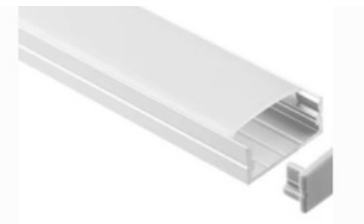
Part #: BN256
W: 1" x H: 5/8"
Length: 8ft
Adjustable / Large Housing



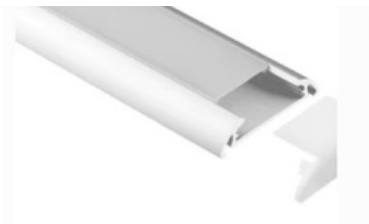
Part #: BN257
W: 11/16" x H: 1/4"
Length: 8ft
Flush Mount
For use in an
indent application.



BN258
W: 1 1/4" x H: 1 1/4"
Length: 8ft
Large housing to be
used in suspension
application



Part #: BN259
W: 15/16" x H: 3/8"
Length: 8ft



Part #: BN260
PC Cover:
Frosted Diffuser
W: 1 1/4" x H: 1/4"
Length: 8ft



Part #: BN261
PC Cover:
Frosted Diffuser
W: 1 15/16" x H: 5/8"
Length: 8ft



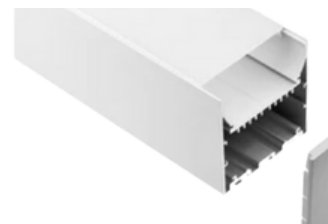
Part #: BN262
PC Cover:
Frosted Diffuser
W: 2 1/8" x H: 1 1/4"
Length: 8ft



Part #: BN263
PC Cover:
Frosted Diffuser
W: 12/16" x H: 1/8"
Length: 8ft & 6.5ft



Part #: BN264
PC Cover:
Frosted Diffuser
W: 1" x H: 7/16"
Length: 8ft



Part #: BN265
W: 3" x H: 3"
Length: 8ft
Large housing to
be used in suspension
application

EXIT SIGNS-EMERGENCY LIGHTS



APPLICATIONS

- Emergency Exits
- Restaurants
- Hotels
- Commercial Buildings



Code	Description
EX1500	Exit Sign Red Letter with Battery Backup
EX1501	Exit Sign Green Letter with Battery Backup



Code	Description
EX1502	Exit Sign Combo Red Letter with Battery Backup
EX1503	Exit Sign Combo Green Letter with Battery Backup



WET LOCATION

Code	Description
EX1505	Exit Sign Red Letter with Battery Backup
EX1506	Exit Sign Green Letter with Battery Backup



Code	Description
EX1507	Arcylic Exit Sign Red Letter with Battery Backup
EX1508	Arcylic Exit Sign Green Letter with Battery Backup



Code	Description
EX1504	F-1 F-2 Emergency Light



Code	Description
EX1509	Emergency Light

Rope Lights/Flex Tubes

CYANTEK LED LIGHTING



(562)499-9597

(562)392-2999

(844)456-2926

**15323 Garfield Ave Unit B,
Paramount, CA 90723**

www.cyantekledlighting.com



CYANTEK
LED LIGHTING

